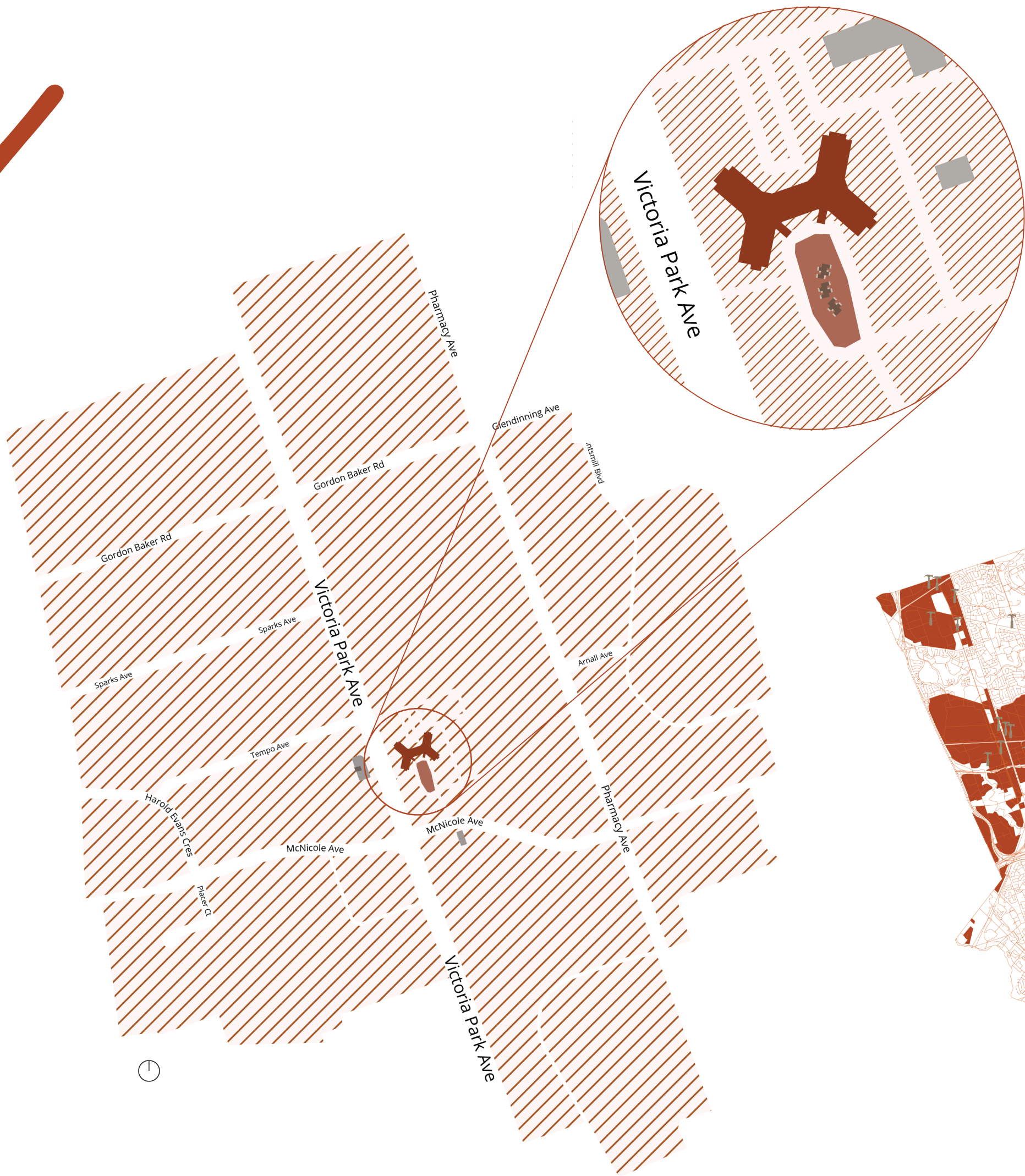


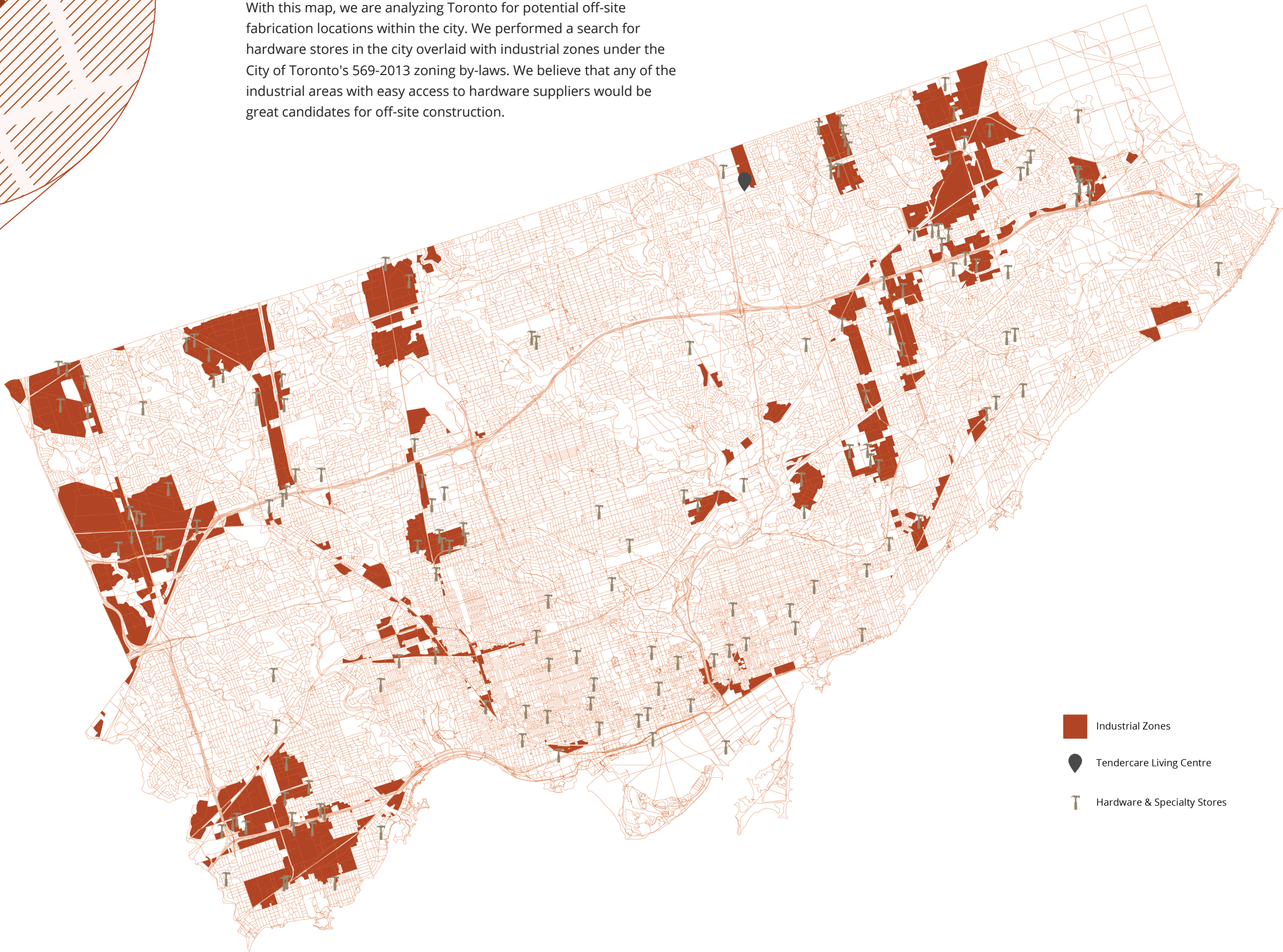
# SEPERATELY TOGETHER

Separately Together gives residents' families peace of mind by being able to visit their loved ones without significant risk to either parties' health. Located on the neighbouring lawn of Tendercare Living Center, our designed units are prefabricated at an off-site location before being transported to the site. The complete design consists of 12 units clustered into three blocks, each with an alternating placement of windows, ramps and furniture. Our project intends to break the conventions of modular construction by refocusing on it's advantages of less invasive assembly, as well as high control of design through off-site customization. As a result, creating prefabricated units suitable for families to meet for longer durations of time, without compromising comfort or health.



CITY OF TORONTO OFF-SITE CONSTRUCTION ANALYSIS

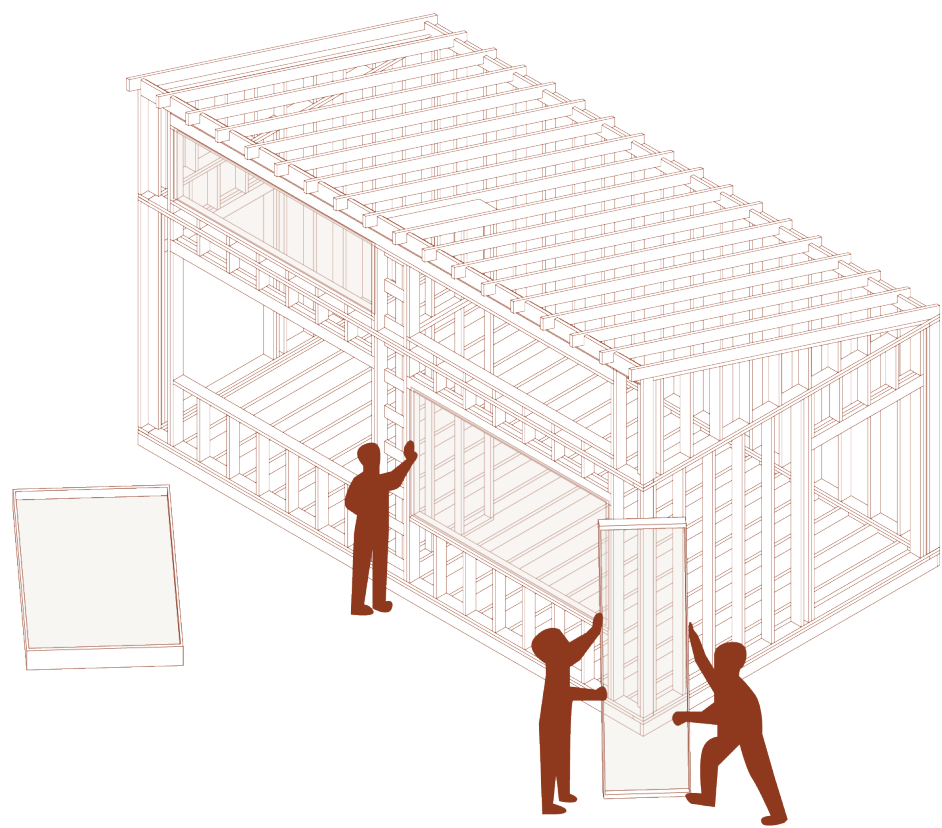
With this map, we are analyzing Toronto for potential off-site fabrication locations within the city. We performed a search for hardware stores in the city overlaid with industrial zones under the City of Toronto's 569-2013 zoning by-laws. We believe that any of the industrial areas with easy access to hardware suppliers would be great candidates for off-site construction.



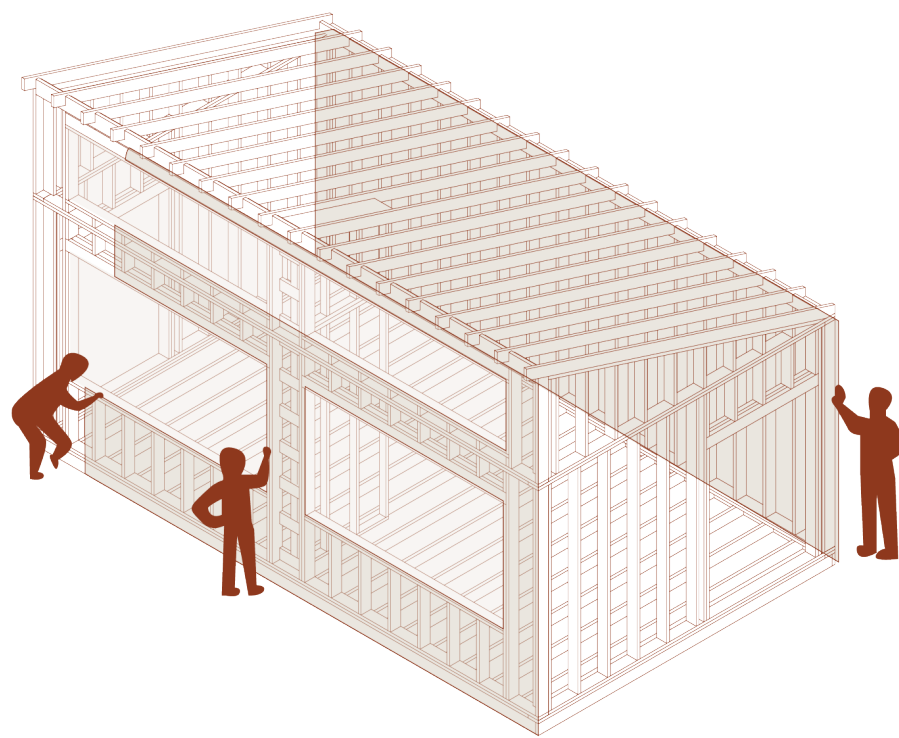
ASSEMBLY PROCESS



DAY 0  
Step 1: Studs for exterior, interior walls and floor



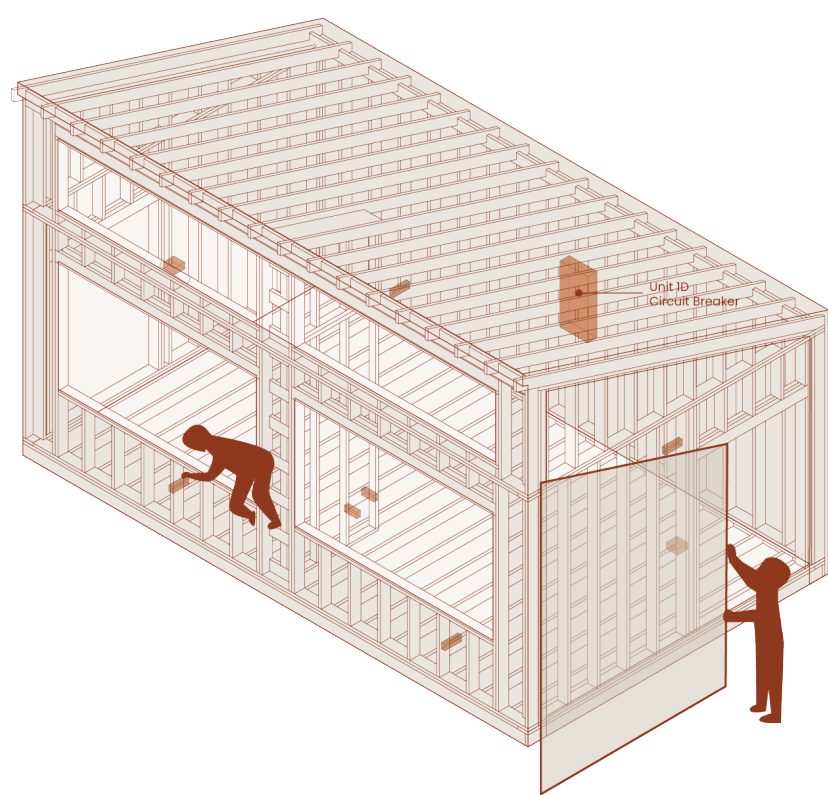
DAY 10  
Step 2: Exterior windows are installed once the entire framing is completed



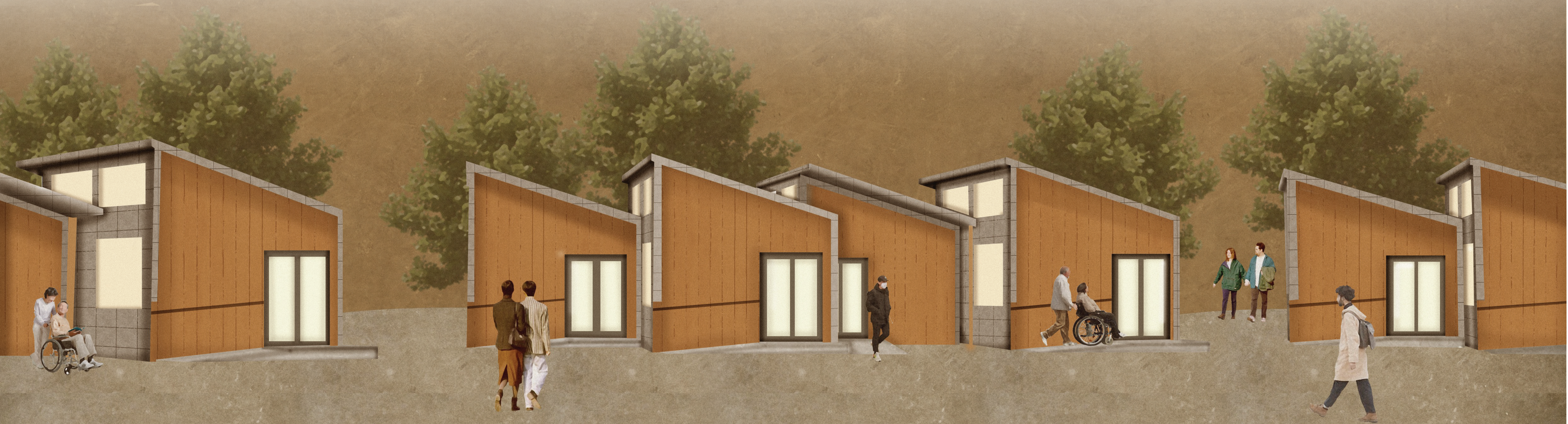
DAY 15  
Step 3: Exterior Cladding is installed



DAY 20  
Step 4: The flooring is then completed

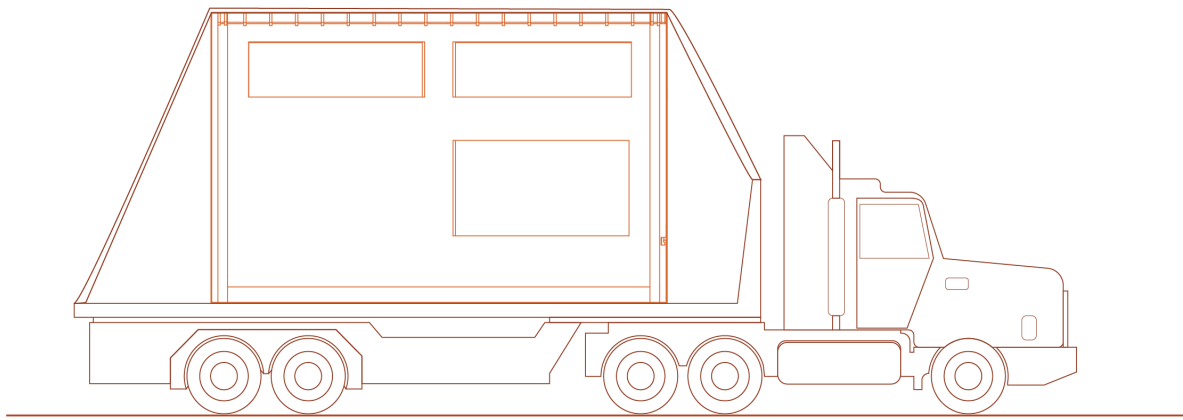


DAY 25  
Step 5: Final off-site assembly before transportation includes installing the interior divider window panel and attaching electric boxes to wall studs.

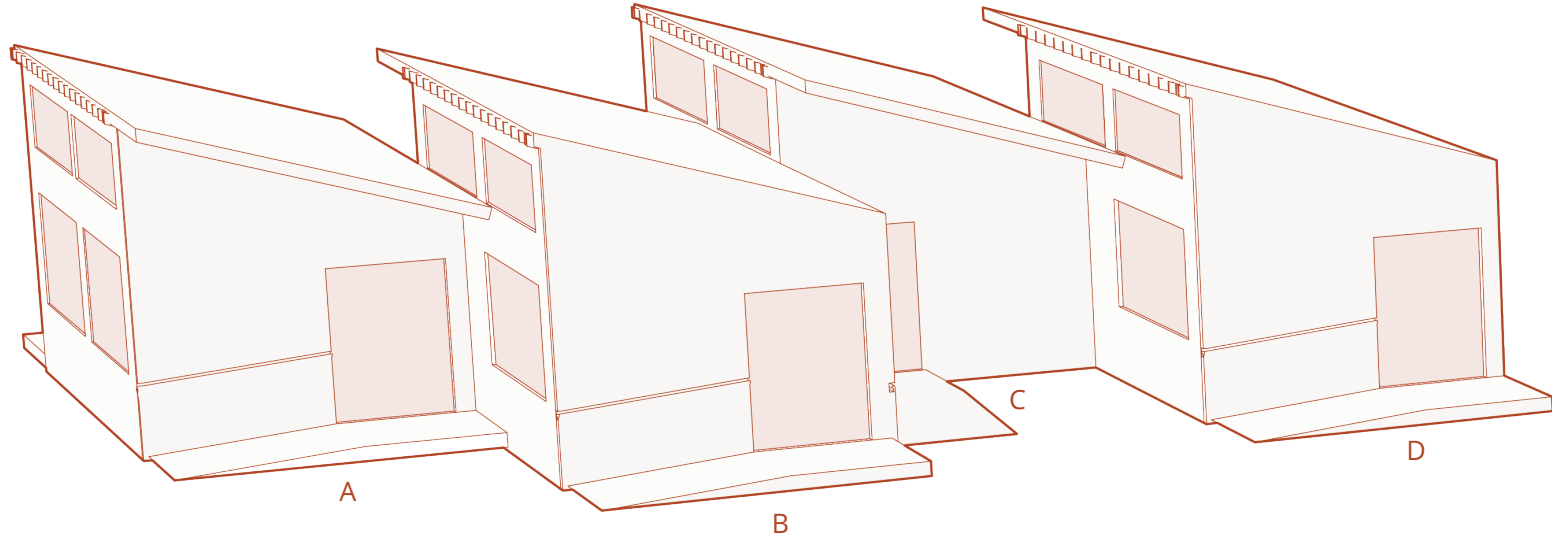




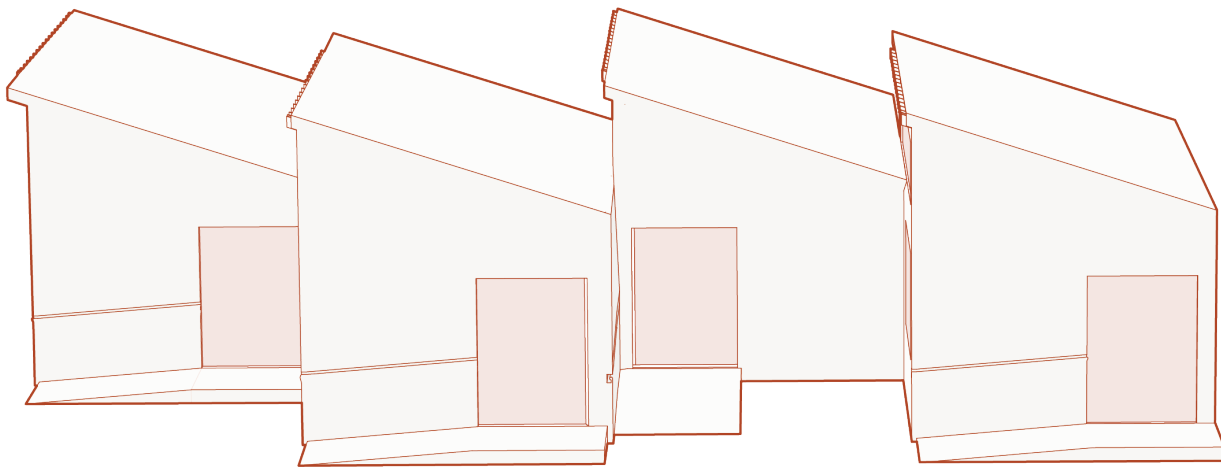
TRANSPORTATION TO SITE



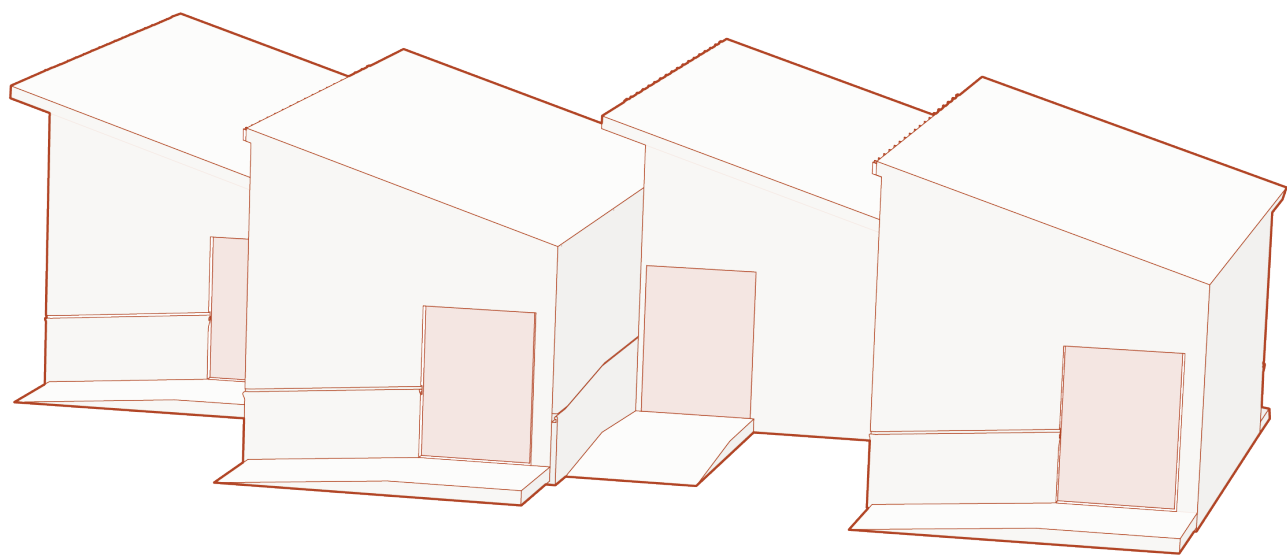
Block 1



Block 2

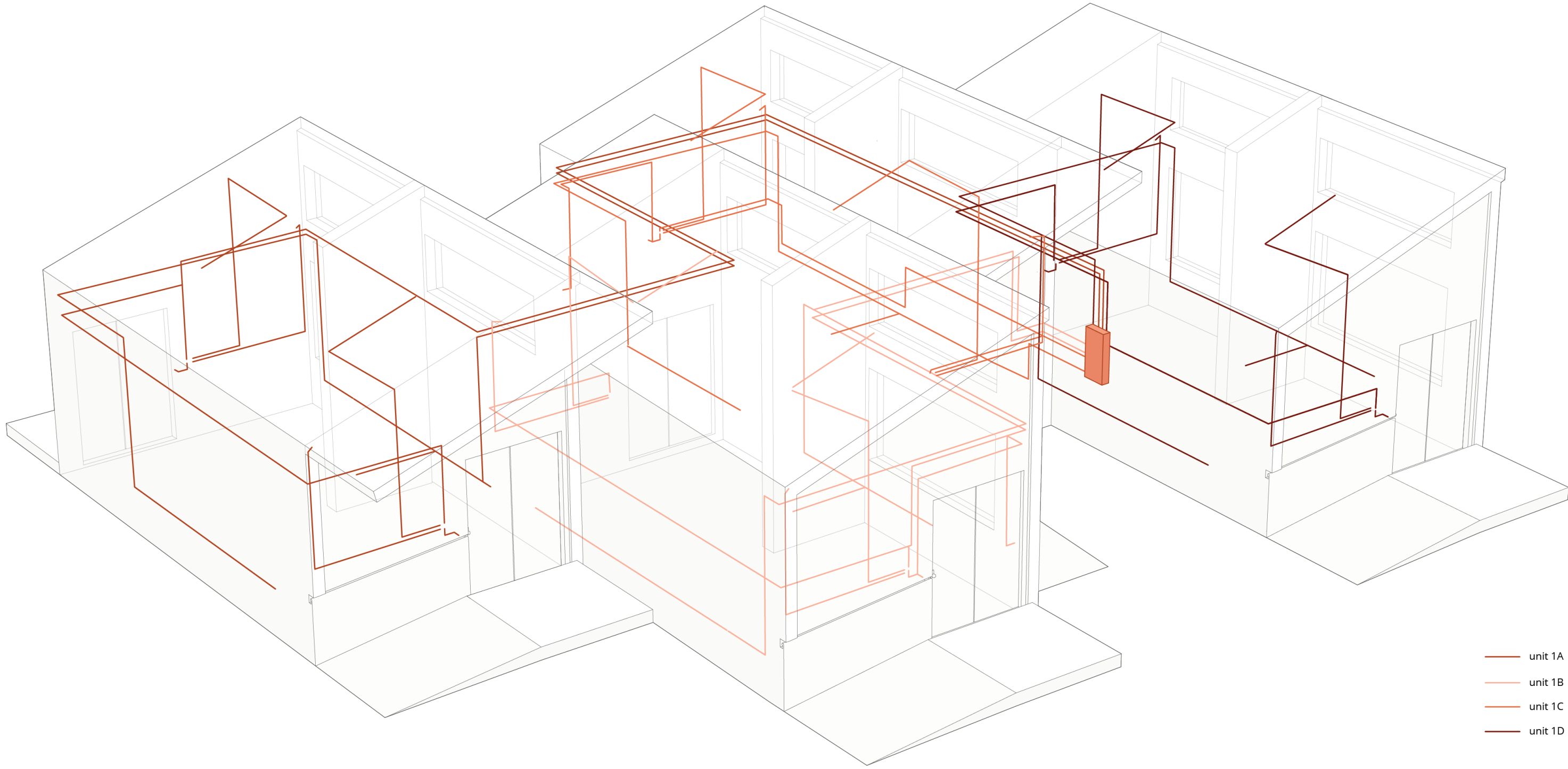


Block 3

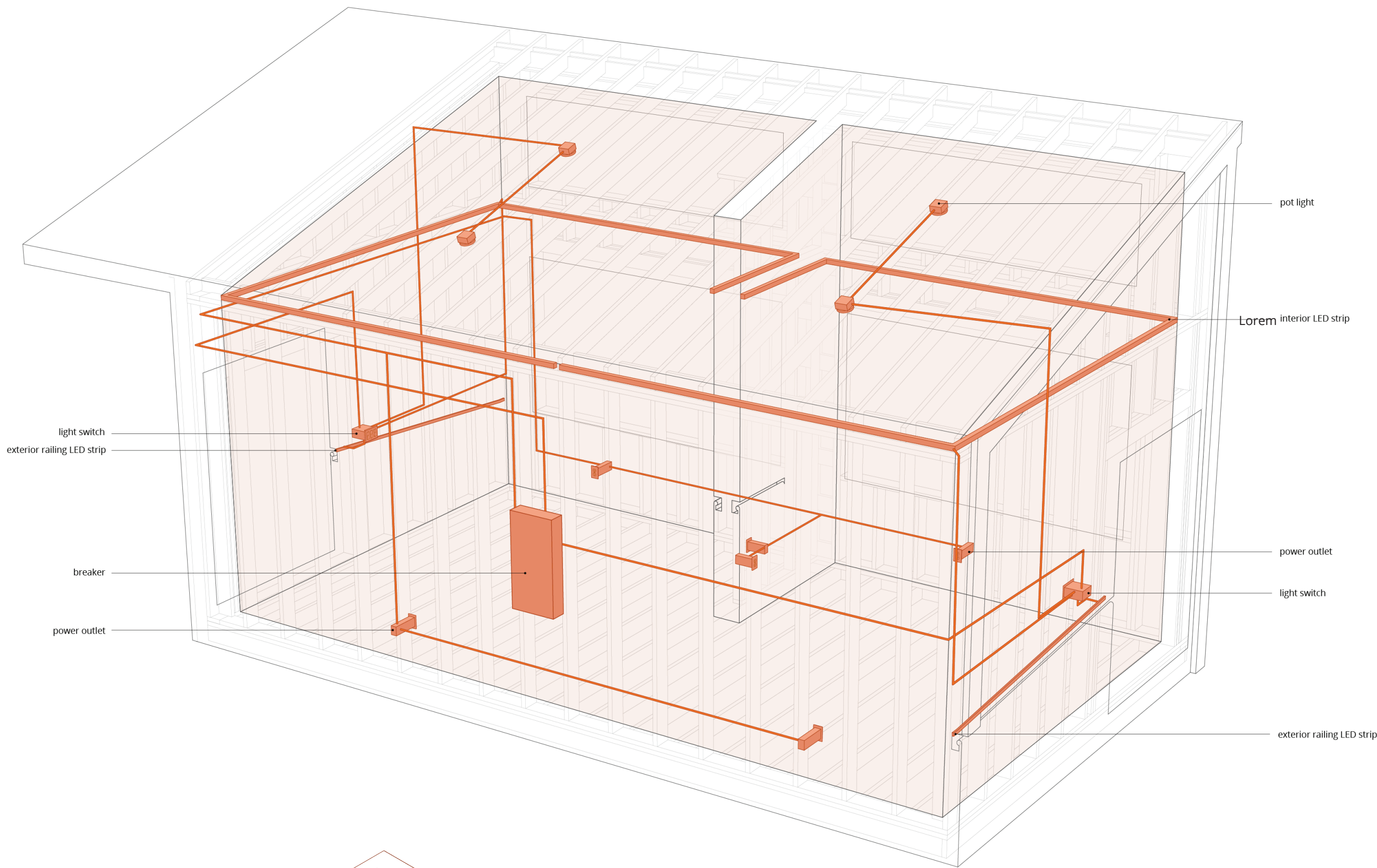


After being transported to the site at Tendercare Living Center, electrical wiring for the lighting system, plumbing to the water supply main and sewage are connected to the existing infrastructure. Final touches include placing the plexiglass divider in the middle of the unit, and furnishing.

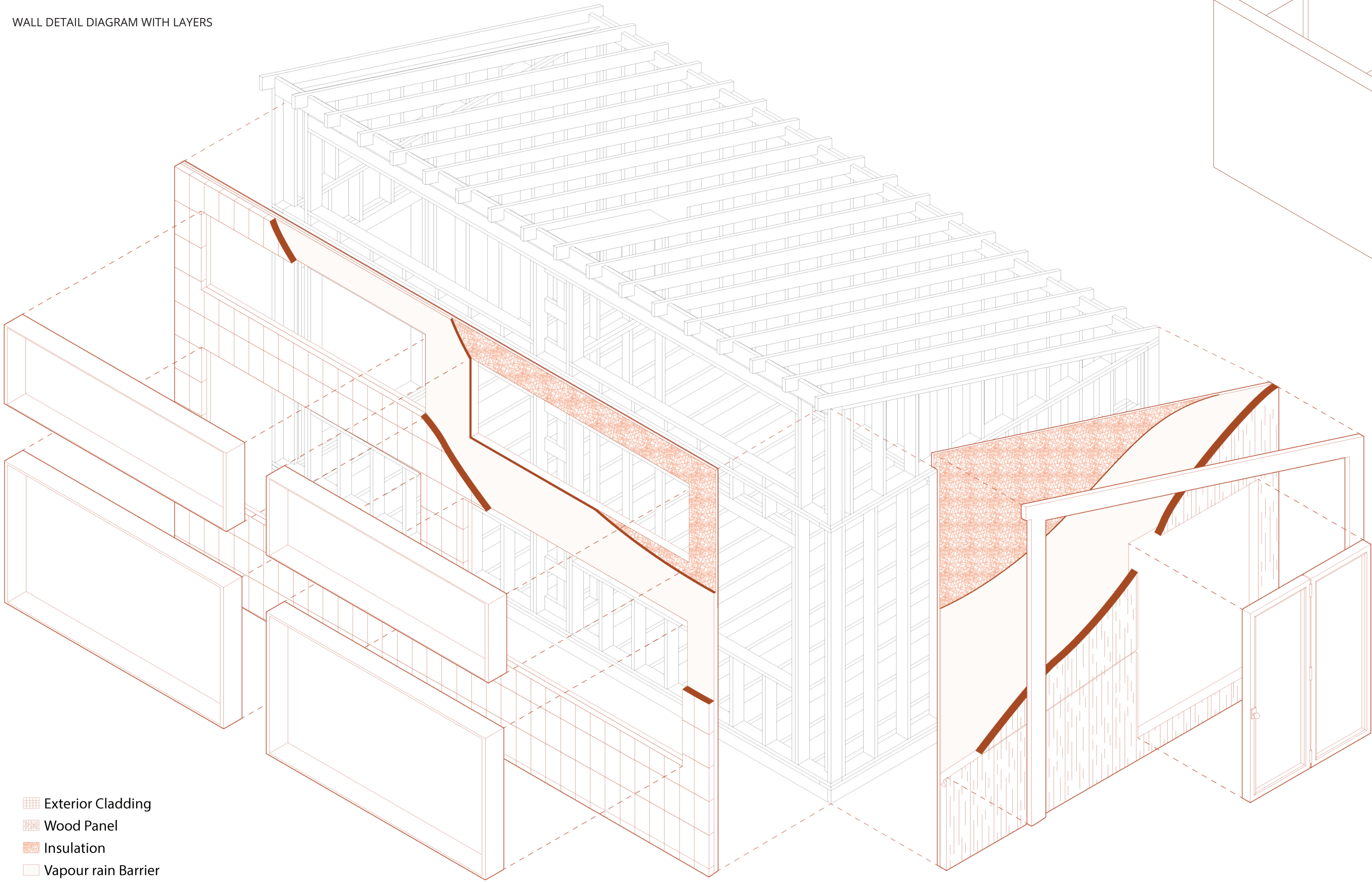
ELECTRICAL WIRING ACROSS ALL UNITS



ELECTRICAL WIRING AND LOADS IN UNIT 1D

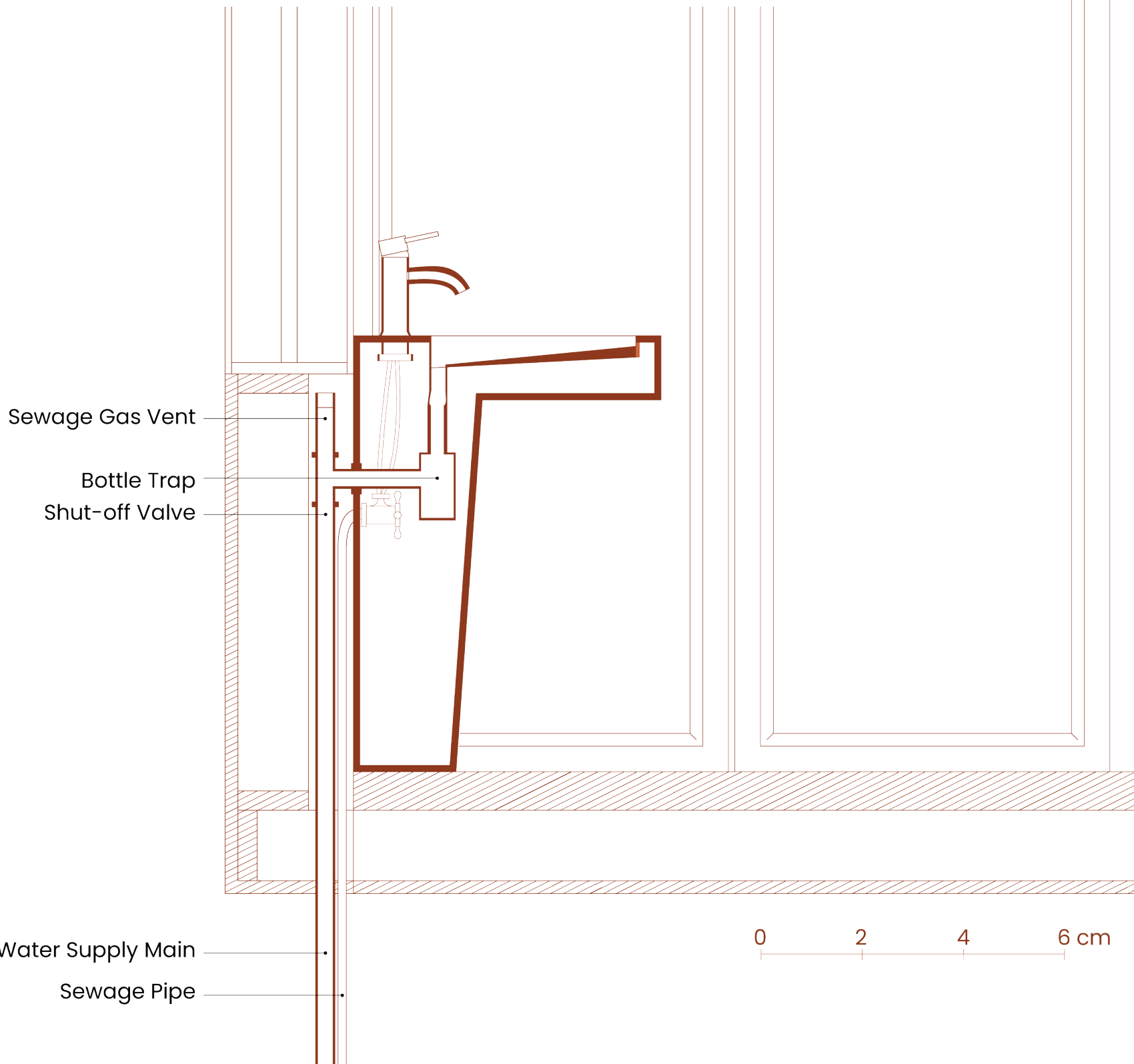
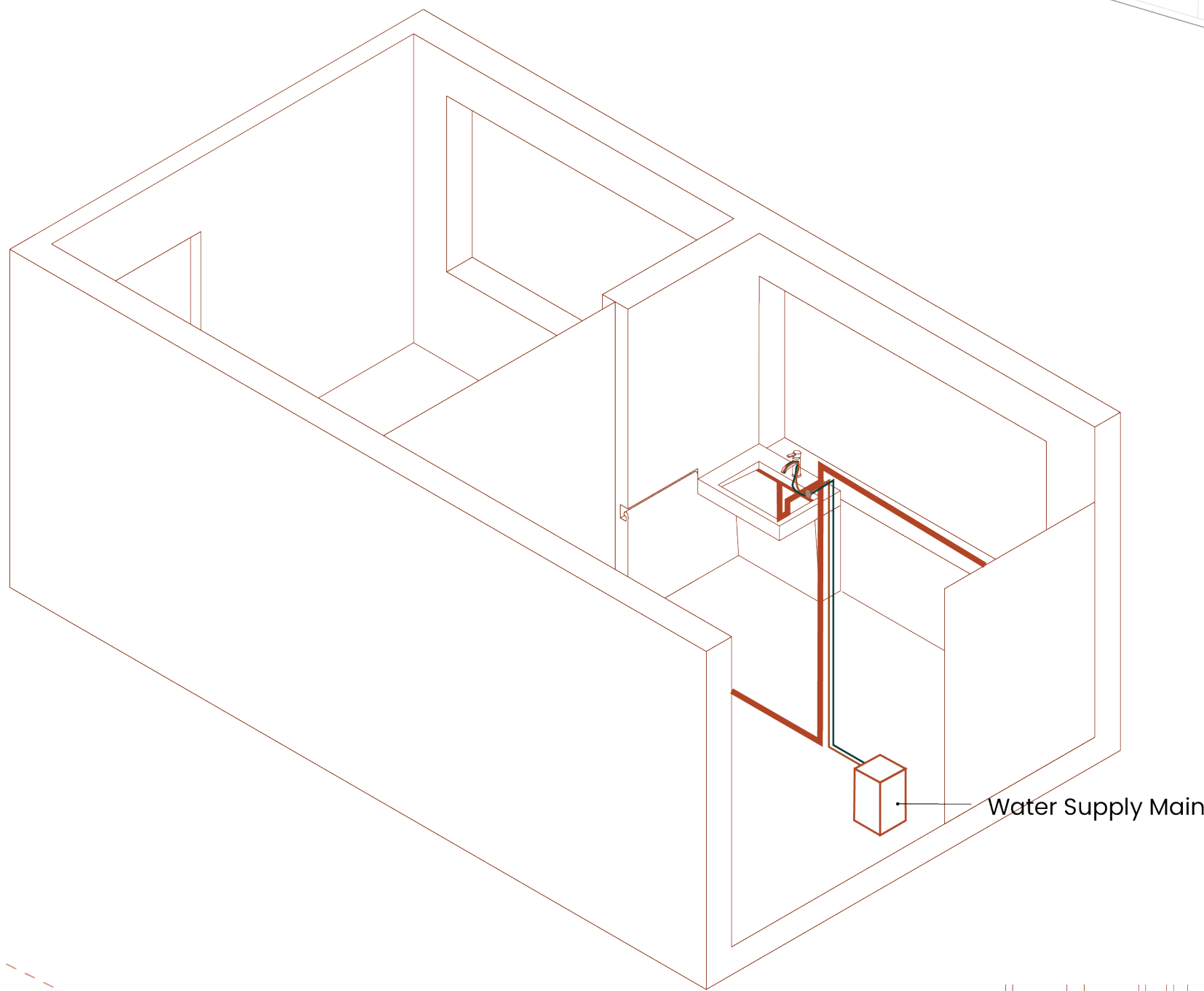


WALL DETAIL DIAGRAM WITH LAYERS



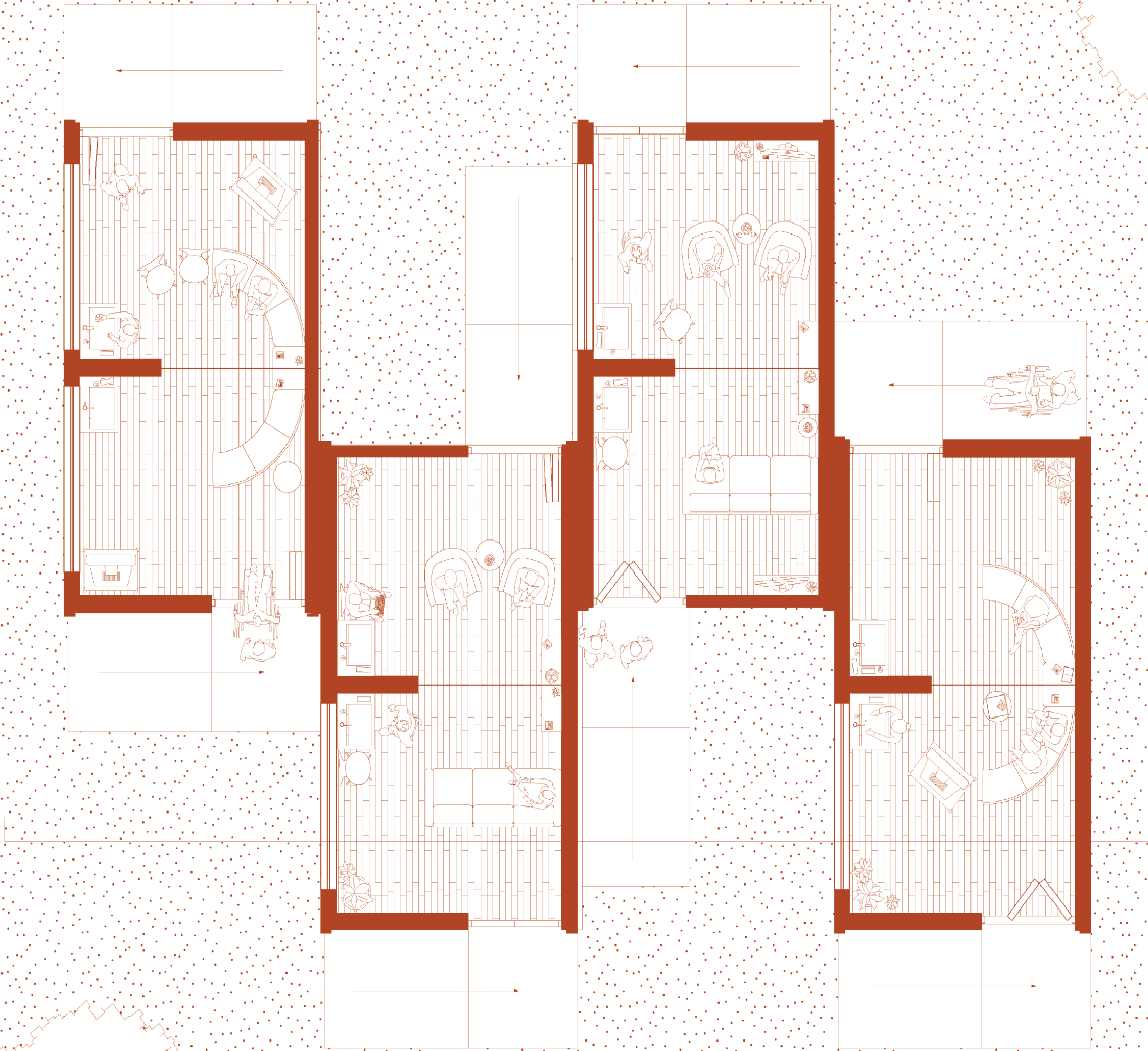
SINK PLUMBING DIAGRAM

The sink is installed in the room to provide a convenient way for visitors and residents to wash their hands. The sink is designed to be wheelchair accessible and minimalist by reducing the design to its fundamental qualities. The conventional siphon is replaced by our rendition of the Horizontal Integrated Siphon, which is also more effective in water drainage.



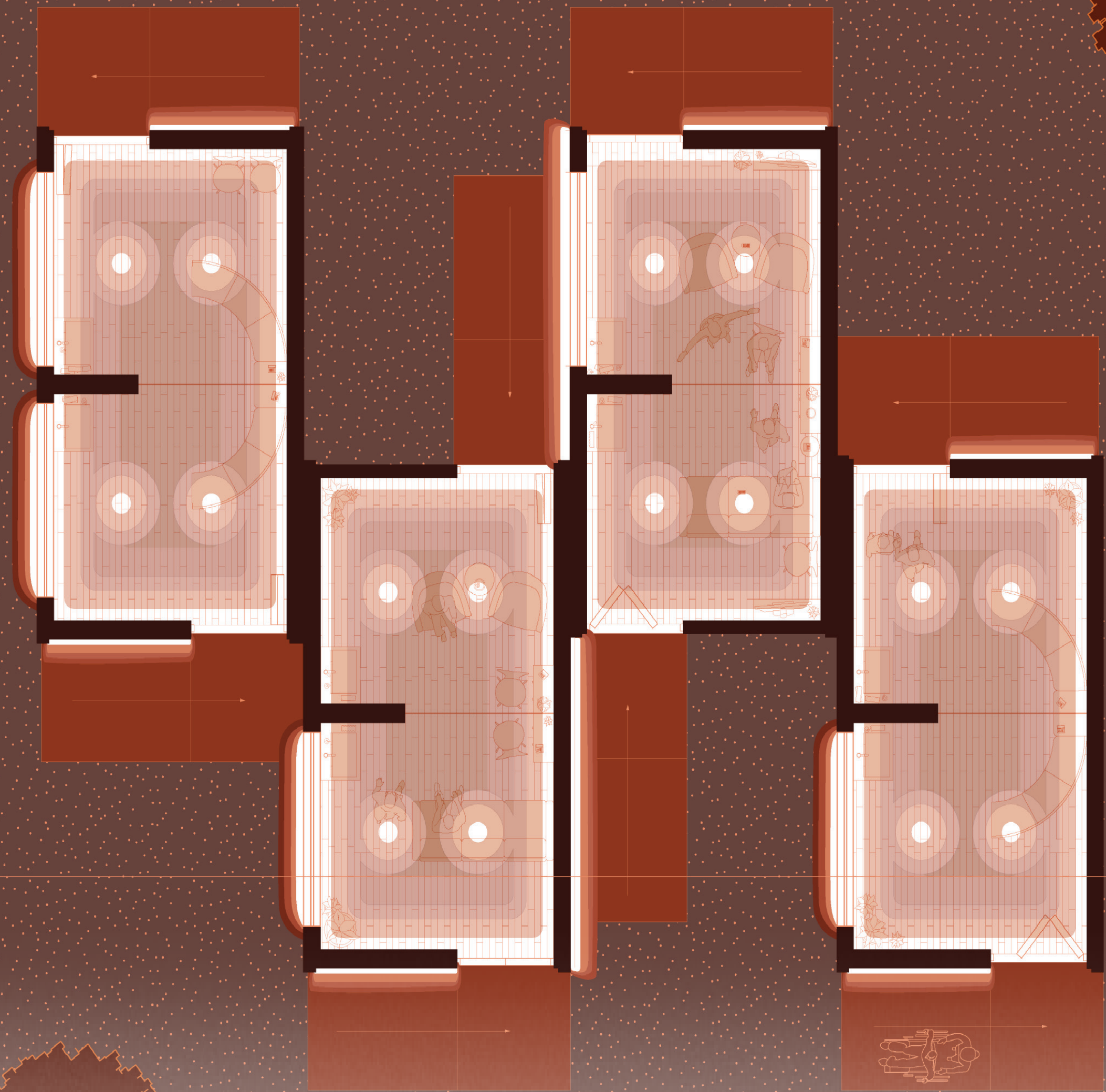


DAYTIME PLAN OF BLOCK 2



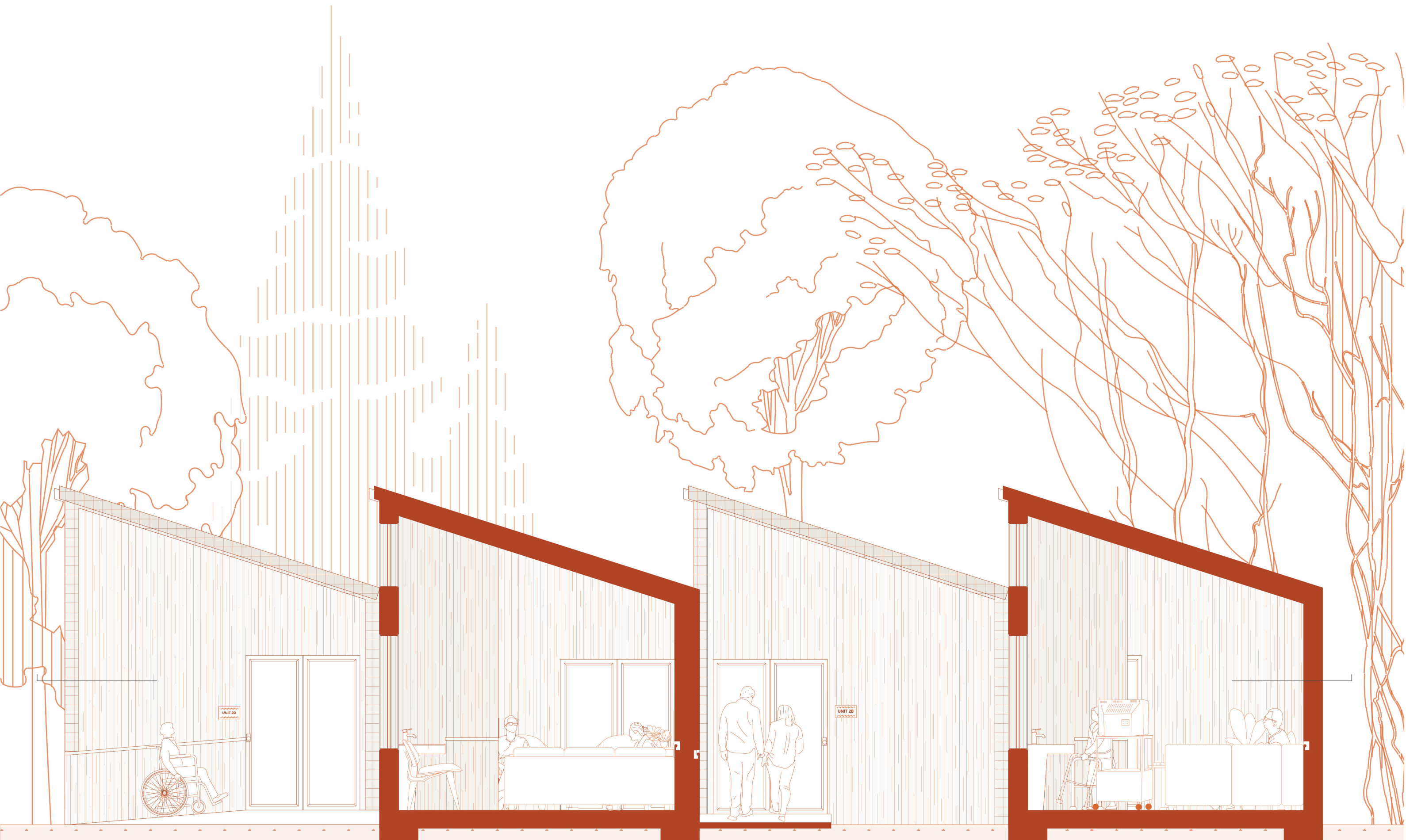
NO

AFTER HOURS PLAN OF BLOCK 3

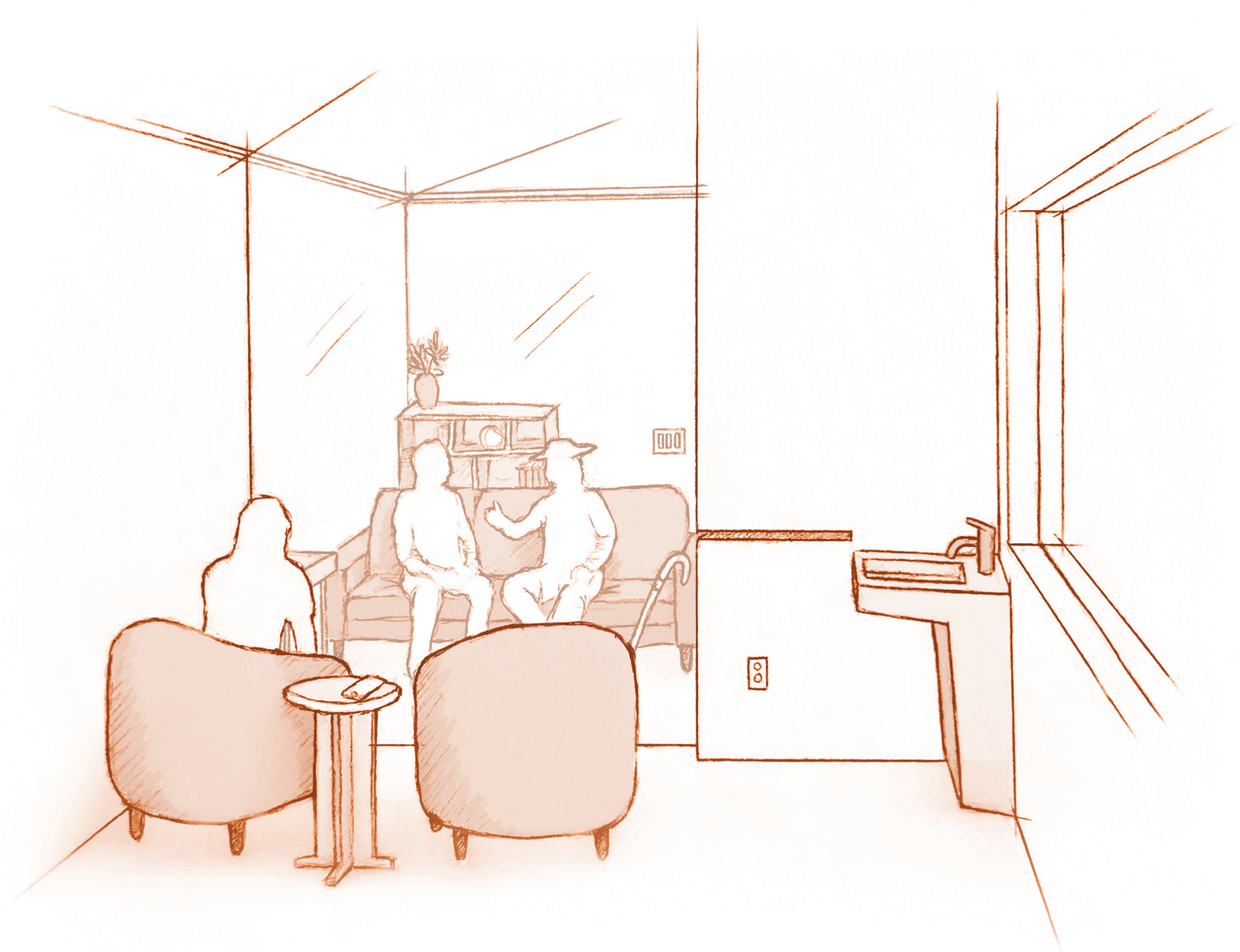


NO

SECTION OF BLOCK 2



INTERIOR SKETCH OF A UNIT IN USE





This project is designed for Tendercare Living Center, a long-term elderly care center located in Scarborough, Ontario. Retirement homes were hardest hit by the COVID-19 pandemic. Since the beginning of the pandemic, Tendercare has witnessed the death of over 60 residents. The repeated COVID-19 outbreaks at these locations have highlighted the ongoing issue of inadequate conditions within the care industry. Despite high vaccination rates, it is still not easy for families to visit. Furthermore, due to rapidly melting ice caps, we will likely face more pandemics in the future, as ancient viruses and bacteria are released into the environment. Therefore, our proposed project aims to provide families a safe place to meet their loved ones in a less institutional environment.

As a temporary structure, composed of two conjoint rooms divided by a clear plexiglass wall, *Separately Together* allows for both parties to meet in a private unit that is detached from Tendercare Living Center, instead located on the front lawn. It will enable the residents from Tendercare to be separated in one room, thus able to interact without making any physical contact. When designing our form, we wanted to ensure that we could have the most amount of sunlight throughout the entire day. As such, we decided to make a pitched roof and two sets of windows, a method proven to be an effective built form to capture sunlight.

While modular fabrication has become synonymous with low-cost efficiency, it also has enormous advantages for conventional construction in situations that require immediate solutions.

An off-site design approach is perfectly suited to the physical and logistical restraints of COVID-19. As a suburban neighbourhood populated by a vulnerable population, the ability to complete 68% of construction off-site is less disruptive to the community and allows for flexibility in building a fully independent structure that also caters to health precautions and comfort. All wall studs, windows and flooring will be fabricated off-site while custom light fixtures and sinks will be simultaneously fabricated at other off-site locations. Afterwards, the individual units will be transported via highway to the fully installed on-site with electrical and plumbing connections, where the completed unit will be furnished. With base components of plumbing and electrical, and overall structural foundations completed prior to on-site assembly, residents of Tendercare will not be put at risk by the influx of professionals required to work on *Separately Together*.