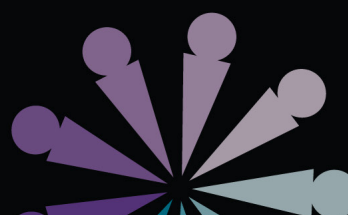
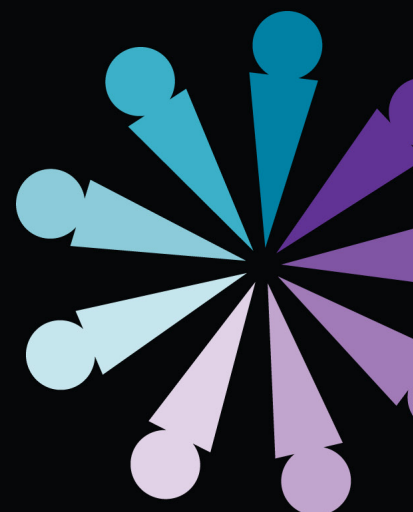
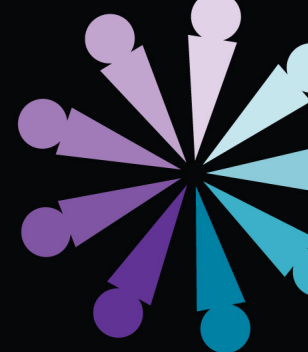




# 21 22

## ANNUAL REPORT

MAY 1, 2021 - APRIL 30, 2022



**Muriel McQueen Fergusson Centre  
for Family Violence Research**

678 Windsor Street  
P.O. Box 4400  
Fredericton, NB  
Canada, E3B 5A3

Tel: (506) 453-3595

Fax: (506) 453-4788

Email: [fvrc@unb.ca](mailto:fvrc@unb.ca)

Website: [www.unb.ca/mmfc/](http://www.unb.ca/mmfc/)

Facebook: [www.facebook.com/mmfc](http://www.facebook.com/mmfc)

Instagram: [www.instagram.com/mmfcfvr/](http://www.instagram.com/mmfcfvr/)

Twitter: <https://twitter.com/mmfcfvr>



---

Muriel McQueen Fergusson Centre for Family Violence Research (MMFC) has a mandate to undertake and to support activities which will contribute to the elimination of family violence and violence against women and children from our society. In carrying out this mandate, the Centre shall support disciplinary and interdisciplinary research, scholarly and community-based conferences and workshops, and public education activities on any and all aspects of family violence and violence against women. It shall provide a national focus for academic and community-based research, and seek the participation of, and collaboration with, researchers from around the world.

---



Taken from the revised Memorandum of Understanding signed by the President of UNB and the President of the Muriel McQueen Fergusson Foundation in November 2012.

## TABLE OF CONTENTS

04	MESSAGE FROM THE DIRECTOR
06	STAFF   STUDENTS
07	BOARD OF DIRECTORS   EX-OFFICIO
08	SPECIAL THANKS
09	MMFC COMMITTEES & MEMBERSHIP
10	ADMINISTRATIVE UPDATE
12	FERGUSSON FOUNDATION REPORT
14	RESEARCH HIGHLIGHTS & THEMES
32	RESEARCHERS AND FELLOWS OF THE MMFC
44	COMMUNITY INVOLVEMENT
45	COMMUNITY WORK HIGHLIGHTS
51	EDUCATION
	KNOWLEDGE TRANSFER OPPORTUNITIES
53	Keynote Addresses & Invited Presentations
56	Conferences & Workshop Presentations
60	Articles, Chapters
65	Books
67	Media Engagements
68	MMFC-hosted Webinars
69	Sexual Violence Conference
70	Other Activities
72	FINANCIAL OVERVIEW
74	GRANTS AND AWARDS
76	FINANCIAL REPORT





# MESSAGE FROM THE DIRECTOR

Last year's annual report highlighted themes of change and uncertainty associated with COVID-19. While the pandemic persists and change and uncertainty continue to have a significant impact on our 2021/22 experience, themes of innovation and learning have also influenced our work this year. As Interim Director during Dr. Cathy Holtman's well-deserved sabbatical, I personally experienced an enriching year of learning. My positive experiences and the continued success of the centre would not have been possible without the commitment and effort of all the MMFC staff. Sheila Burt's two decades of experience navigating university administrative processes, and her ceaseless efforts to connect communities, have expanded the center's reach and influence. Danie Gagnon's experiences as a researcher, and her commitment to supporting students attached to the MMFC, have been essential to all the center's endeavours. And Caen Squires has devoted their talent and aptitude for visual communication, as well as their dedication to education, to ensuring that the MMFC's work reaches a wider audience than ever before. Together, we learned how to support the work of the MMFC, and each other, through a changing and uncertain time marked by shifting public health and university safety measures. The silver-lining is that this context encouraged us to be resourceful and devise new strategies to engage researchers, students, government officials, front-line service providers, and public stakeholders.

In the fall, we augmented our annual research day by partnering with Sexual Violence NB, the GNB Women's Equality Branch (WEB), and the Université de Moncton (UdeM) to coordinate the 2021 Sexual Violence Virtual Research Conference. Following this event, we part-



nered with WEB again to produce three short educational documentaries with front-line D/IPV service-providers. These resources were developed as part of an endeavour to educate GNB Ministers and Executive Assistants on D/IPV resources in the province. In the winter, we coordinated an initiative centred on research policy briefs and how researchers may use this instrument for impact and to reach various audiences. This effort concluded with a well-attended virtual panel organized by Arts 4000 Intern Ewos Emiko. For the presentation, she interviewed Meranda McLaughlin, Bronwen Cunningham, and Joanne Fullerton about their experiences creating and using research briefs to influence government and institutional policy. In the spring, we launched an environmental scan to determine the extent to which D/IPV services in New Brunswick are coordinated to support QTBIPOC people and communities. Caen Squires took on a leadership role in this project, and Niko Coady is in the process of conducting the survey. During the summer, we initiated two media production ventures on trauma-informed courts and restorative justice with the GNB Department of Justice and Public Safety. We were also excited to learn that the MMFC, in partnership with the MMFF, was awarded two grants from the Government of Canada office of Women and Gender Equality (WAGE) to support unique, new, and experimental media-based knowledge mobilization ventures. The MMFC is excited to build on the initiatives and innovations we established this year. We are enthusiastic to continue to build important partnerships with faculty at UdeM, and partners at WEB, Sexual Violence NB, and other community stakeholders and service-providers.

Even though my tenure in this post has come to an end, I am excited to continue my relationship with the MMFC in the coming years. The MMFC and the FF have long supported my work in education, as well as my participatory research and filmmaking initiatives with young people. Our relationship began in 2007 while I was working on my Master's thesis in education. At that time, I was part of an MMFC project called Acting Out, which was coordinated by my research supervisor, Dr. Linda Eyre. This study provided me with my first experiences as an educational researcher. Since then, the MMFC has continued to play an important role in my educational and professional path as a scholar and filmmaker. I have been very lucky to have been supported by the MMFC on different projects over the years. It has been a great honour to return that energy and support this year. Thank you to everyone who has assisted me in navigating this educational experience. I look forward to continuing to learn and innovate with the MMFC through continued, strong, and meaningful collaborations in the years to come.

Matt Rogers, PhD  
Interim Director, MMFC

## STAFF OF MMFC

---

- Dr. Catherine Holtmann, Director (sabbatical leave July 1, 2021)
- Dr. Matt Rogers, Interim Director
- Sheila Burt, Acting Associate Director
- Caen Squires, Communications Officer
- Danie Gagnon, Administrative Coordinator

## STUDENTS OF THE MMFC

---

Every year, students and postdoctoral fellows make invaluable contributions to the work of the MMFC while acquiring research and workplace skills.

- Anna Fusco-Virtue, Research Assistant
- Boluwatife Oduntan, Work Study Winter Term
- Clothilde Parent-Chartier, Research Assistant
- Deevani Navakumar, Research Assistant
- Elizabeth Matheson, Research Assistant
- Ewos Emiko, Arts Internship, Faculty of Arts (Fall 2021-Winter 2022)
- Kelly Brennan, Research Assistant
- Lucia Klencakova, Eaton Research Visitor Fellow
- Mackenzie Pond, Arts Internship, Renaissance College (Summer 2021)
- Mayme LeFurgey, Post Doctorate Fellow, Purdy Crawford
- Niko Coady, Volunteer (Summer 2021, Fall 2021, Winter 2022)
- Ojaswi Joshi, Work Study Fall Term
- Shanthi Bell, Digital Content Designer, Canada Summer Jobs (8 weeks)
- Zainab Al-Muttairi, Research Assistant

## BOARD OF DIRECTORS

---

The Board of Directors met four times between the months of May 2021-April 2022. Board membership confirmed during the AGM which was held in September, 2021 is as follows:

- Tracey Rickards, Associate Professor, Faculty of Nursing, UNBF (Board Chair)
- Stefanie Hunt-Kennedy, Professor, Faculty of Arts, UNBF
- Greg Keeley, Representative, Fergusson Foundation Board
- Michelle Harris Genge, Director, Interministerial Women's Secretariat, PEI (Board Secretary)
- Lyne Chantal Boudreau, Professeure et chercheure en administration de l'éducation, Université de Moncton
- Shiva Nourpanah, Provincial Coordinator, Transition House Association of Nova Scotia
- Karla O'Regan, Associate Professor, Criminology, St. Thomas University
- Lindsay Manuel, Program/Policy Advisor, Women's Equality Branch GNB

## EX-OFFICIO:

---

- Joanne Wright, Dean of Arts, UNBF
- David MaGee, UNB Vice President, Research
- Meranda McLaughlin, President, Fergusson Foundation
- Elaine Stairs, Treasurer, Fergusson Foundation
- Matt Rogers, Interim Director, MMFC
- Sheila Burt, Acting Associate Director, MMFC
- Rebecca Francis, Executive Director, Fergusson Foundation



## SPECIAL THANKS

---

We would like to thank the following individuals for their service and contributions to the MMFC Board during their tenure:

- [Martine Stewart](#), Director, Violence Prevention and Community Partnerships, Executive Council Office, (Board Chair) (2018-2021)
- [Genevieve LaTour](#), Executive Director of Crossroads for Women Inc., Moncton (2020-2021)
- [Norma Dubé](#), President, Fergusson Foundation (2019-2021)



# MMFC COMMITTEES & MEMBERSHIP

The MMFC has several standing committees that assist with the work of the Centre. We would like to recognize and thank the following individuals for their active participation and contribution:

## Finance/Executive Committee

- Joanne Wright
- Dave MaGee, Chair-Finance Committee
- Tracey Rickards, Chair-Executive Committee
- Meranda McLaughlin
- Elaine Stairs
- Cathy Holtmann
- Sheila Burt
- Rebecca Francis
- Lindsay Manuel
- Michelle Harris-Genge, Secretary

## Research Priorities Committee

- Tracey Rickards, Chair
- Cathy Holtmann/Matt Rogers
- Karla O'Regan
- Shiva Nourpanah

## Communications and Marketing Committee

- Angie Deveau
- Shiva Nourpanah
- Caen Squires
- Cathy Holtmann/Matt Rogers
- Lindsay Manuel

## Nominations Committee

- Joanne Wright, Chair
- Sheila Burt
- Tracey Rickards
- Martine Stewart

## Strategic Planning Committee

- Lynn Chantal Boudreau, Chair
- Meranda McLaughlin
- Rebecca Francis
- Cathy Holtmann/Matt Rogers
- Sheila Burt





## ADMINISTRATIVE UPDATE

---

Over the past year, staff at the Centre focused their efforts on achieving the strategic goals as set out in the MMFC Strategic Plan 2016-2022. The five priority areas included: research; education, training and knowledge transfer; heightening the MMFC profile; influencing policy; and governance.

Here are a few highlights:

- Two new Research Fellows joined the MMFC: Dr. Petrea Taylor and Dr. Alexa Yakubovich.
- In January, the MMFC launched, in collaboration with the Centre for Investigative Interviewing, a new online professional development course Essential Skills for Interviewing Children.
- We hosted and recorded numerous webinars using virtual platforms that enabled a broader reach and increased participation rates. Recordings were made available on our website post-delivery.
- Staff actively participated in community committees, working groups and projects fostering relationships with our key stakeholders.
- Danie Gagnon joined the MMFC team as our Administrative Coordinator.

- Implementation of the communications strategies continued throughout the year with updates to website and targeted messaging to relevant audiences using social media platforms.
- The MMFC hosted a meeting with staff members, students, and researchers with the Minister responsible for Women's Equality, Tammy Scott Wallace to share and discuss their work and the work of the centre.
- The University of New Brunswick and the Fergusson Foundation continued discussions to review and update the Memorandum of Understanding between the parties.
- An operational guide was created for the MMFC and Fergusson Foundation to capture best practices for working together.
- Building upgrades to flooring on the basement level of the Centre were completed in the summer of 2021.



(Top) Minister Tammy Scott-Wallace visited the Muriel McQueen Fergusson Center in November 2021 to discuss family violence in New Brunswick.

(Left) Communications Officer Caen Squires and Administrative Coordinator Danie Gagnon.







# FERGUSSON FOUNDATION REPORT

For more than 37 years the Fergusson Foundation has remained committed to the same mission, the prevention and elimination of Family Violence.

In 2021-22, the Fergusson Foundation continued our efforts to be a catalyst for change through four key pillars; through awareness and capacity building; supporting organizations and education programs providing services to those impacted by family violence with our grants program; honouring and recognizing the leaders in our community who make outstanding contributions toward the prevention and elimination of family violence; and by funding the vital action-oriented research of the Muriel McQueen Fergusson Centre for Family Violence Research.

The Fergusson Foundation's Vision is a society that is based on healthy relationships and is free from violence in all its forms. We exist for those who experience fear and harm in their homes and communities. We believe that together, we can break the cycle of violence and abuse.

Our work is far from done and we recognize that we cannot and do not, do this work alone. Your support has been crucial in our mission and all of us at the Fergusson Foundation would like to thank you for enabling us to get here and encourage you to take action and donate today.

## WAYS TO GIVE



In Honour  
In Memory



One Time  
Donation



Monthly  
Donation



Donate  
Securities



Create a  
Fundraiser

Sincerely,

Rebecca Francis  
Executive Director,  
Fergusson Foundation



# RESEARCH HIGHLIGHTS

The MMFC-affiliated research teams work on a variety of initiatives relating to domestic, family, intimate partner, and gender-based violence.

We encourage and welcome suggestions for new research teams and projects, especially those in line with our Strategic Priorities and the themes.

Individuals or groups who are interested in conducting research under the auspices of MMFC are encouraged to contact us. The MMFC welcomes projects on an affiliated basis.

The Director and Associate Director frequently approach individuals and groups to discuss new research ideas for projects that fall within the MMFC mandate. The MMFC has a Research Policy that guides all research projects associated to the centre.

As is evident in the following sections, members of the MMFC research teams and projects were active in applying for funding, conducting research, and presenting and publishing their findings to a wide range of audiences.

---

## THEMES

Information about the activities of current teams, projects and fellows can be found via the following themes.

- Disabilities
- Gender
- Health
- Immigrants
- Law
- Religion
- Sexual Violence
- Violence Across the Lifespan
- Workplace

# DISABILITIES

## | Violence Against Women Living with Disabilities Research Team

### PRINCIPLE INVESTIGATORS

- Angela Wisniewski, Sociology, Saint Thomas University
- Charles Gaucher, School of Social Work, Université de Moncton

### COORDINATORS

- Angela Wisniewski, Sociology, Saint Thomas University

### COLLABORATORS

- Rina Arsenault, Former Associate Director, Muriel McQueen Fergusson Centre
- Martine Paquet, New Brunswick Association of Social Workers
- Emma MacKenzie Ballard, Premier's Council on Disabilities
- Ken Pike & Sarah Wagner, New Brunswick Community Living
- Meranda McLaughlin, Justice and Public Safety
- Anne Chiasson-Doiron, Vie Autonome Péninsule Acadienne
- Jamie Howie, Long Term Care & Disability Support Services, Government of New Brunswick
- Madhu Verma, New Brunswick Multicultural Council
- Diedre Smith, Women's Equality Branch, Government of New Brunswick
- Lindsay Manuel, Women's Equality Branch, Government of New Brunswick

### ACHIEVEMENTS

The team has been dormant this past year.

Past achievements from this team includes:

Contributing key findings from their research with service providers working in anti-violence and disability support organizations as part of DAWN Canada's expert consultation process. Those recommendations are combined with insights from other researchers and experts from across Canada in DAWN's working paper entitled Draft Recommendations from Subject Matter Experts: Gender Based Violence, Women, Girls and Non-binary people with Disabilities, and the National Action Plan.

# GENDER

**Safe and Understood:** *Intervening with families to promote healthy child outcomes and prevent abuse recurrence for young child victims of domestic violence exposure.*

## PRINCIPLE INVESTIGATORS

- Angelique Jenney, University of Calgary
- Katreena Scott, Western University
- Chantal Bourassa, Université de Moncton
- Geneviève Lessard, Université Laval
- Valérie Roy, Université Laval

## COLLABORATORS

- Centre de ressources et de crises familiales Beauséjour, Shediac, Nouveau-Brunswick
- Maison pour femmes immigrantes, Québec, Québec
- L'Accord Mauricie inc., Trois-Rivières, Québec

## STUDENTS

- Elisabeth Godbout
- Anaïs Bertrand Robitaille

## ACHIEVEMENTS

The project is national in scope with projects that include various components in three Canadian provinces: Ontario, Quebec and New Brunswick. To date, each of the two intervention programs (Mom in Mind and The Caring Dads) have been offered in Quebec. Data from the interviews conducted with participants, stakeholders and coordinators have been analyzed. Results regarding the evaluation of the Caring Dad's program were published this year (<http://kh-cdc.ca/en/img/Research-Summary-4-v4-online.pdf>).

# HEALTH

**iHEAL in context:** *Testing the Effectiveness of a Health Promotion Intervention for Women Who Have Experienced Intimate Partner Violence.*

## PRINCIPAL INVESTIGATORS & CO-INVESTIGATORS

- Kelly Scott-Storey, University of New Brunswick
- Marilyn Ford-Gilboe, Western University
- Colleen Varcoe, University of British Columbia

## COORDINATORS

- Jeannie Malcolm, University of New Brunswick

## ACHIEVEMENTS

Since the last reporting date, longitudinal analysis examining the effectiveness of iHEAL over 18 months has been completed. Initial analysis for cost-effectiveness has been completed and will be finalized in the next month. A paper on the main trial results of this work is in preparation. Qualitative interviews with 31 iHEAL participants were completed in March 2021, and analyzed in depth; a paper on the qualitative findings is currently in preparation. Analysis of data collected from iHEAL nurses (via surveys and qualitative interviews) about the successes and challenges of delivering iHEAL is in progress as part of the Evaluation of Nurse's Experiences of iHEAL. Surveys and interviews of women from the Acadian Peninsula who participated in the pilot study of iHEAL adapted for Francophone women have been completed and analyzed, and a summary created. Additionally, both Francophone nurse interventionists completed a qualitative interview about their experiences delivering iHEAL. Analysis of both the survey and qualitative interviews was completed and summarized, and shared with community partners. This data provided important feedback on the impact, fit and feasibility of delivering iHEAL in the Francophone context.

KMb activities have been ongoing throughout the project as appropriate. Large, public, face-to-face events originally planned could not be held because of ongoing COVID restrictions. We re-aligned our KMb plan with key priorities and what was feasible. Given the positive results of the iHEAL trial, our top priorities include shifting iHEAL to a program that is integrated into real world health care settings, working on publication of trial results and academic dissemination.

In spring 2021, we updated iHEAL resources developed for the trial, including the education offered to nurses, based on feedback from nurses and women who took part in the trial. We have since begun to train more nurses to deliver iHEAL as part of our implementation study at all three sites (NB, ON, BC). This next phase has recently been funded by the Public Health Agency of Canada.

# HEALTH

## | Masculinities, Lifetime Violence and Health

### PRINCIPLE INVESTIGATORS & CO-INVESTIGATORS

- Kelly Scott-Storey, RN MN PhD, Nursing, University of New Brunswick
- Sue O'Donnell, RN MN PhD, Nursing, University of New Brunswick
- Judith Wuest, RN MN PhD, Professor Emeritus Nursing, University of New Brunswick
- Judith MacIntosh, RN MN PhD, Professor Emeritus Nursing, University of New Brunswick
- Marilyn Merritt-Gray, RN MN, Retired Professor, Nursing, university of New Brunswick

### COORDINATORS (ACADEMIC/COMMUNITY)

- Jeannie Malcolm, BA MA, Nursing, University of New Brunswick (Research Coordinator)
- Charlene Vincent, BN MN, University of New Brunswick (Research Assistant)

### STUDENTS

- Petrea Taylor, RN MN PhD, University of New Brunswick

### ACHIEVEMENTS

This is the final report for this project. During this reporting period, we have continued to work on further analysis and to produce manuscripts for publication. We were successful with our recent CIHR application and have been funded for the period of 2021-2026 to continue this program of research. The longitudinal study launching in Spring, 2022 will examine variation in men's health by cumulative lifetime violence and social determinants of health over time.

# IMMIGRANTS

**Violence Against Women Migrants and Refugees:** *Analysing causes and effective policy response CIHR (Gender-Net Plus Joint Call on Gender and UN Sustainable Development Goals)*

## PRINCIPAL INVESTIGATORS & CO-INVESTIGATORS

- Evangelia Tastsoglou, Saint Mary's University
- Myrna Dawson, University of Guelph
- Catherine Holtmann, University of New Brunswick
- Lori Wilkinson, Saint Mary's University

## POSTDOCTORAL FELLOWS

- Mia Sisic (Oct. 2020-Oct. 2021)
- Pallabi Bhattacharyya (Oct. 2021- present)

## MEMBERS OF THE EXPERT ADVISORY GROUP

- Natasha Akhtar
- Kathryn Bates-Khan
- Dr. Amanda Dale
- Dr. Nadia Ferrara
- Rai Friedman
- Ginette Gautreau
- Nuzhat Jafri
- Nneka MacGregor
- Robin Mason
- Deepa Matoo
- Harmy Mendoza
- Hawa Y. Mire
- Syeda Nayab Bukhari
- Shiva Nourpanah
- María José Yax-Fraser

## COLLABORATORS

- Dr. Busra Yalcinoz-Ucan, University of Guelph

## STUDENTS

- Larissa Sweeney, Saint Mary's University
- Camila Reis, Saint Mary's University
- Clothilde Parent-Chartier, University of New Brunswick and Saint Mary's University

## ACHIEVEMENTS

Our project is national and international in scope. While our data derive from Canada, we engage in international comparisons with the national teams of other countries, analyze and write following agreed-upon themes and methodologies. We are currently continuing with data collection from the migrant and refugee women population, but we have also engaged in analyses and presentations of already collected data. A number of publications are forthcoming while others are in the works.

Our latest newsletter is at: <https://www.smu.ca/webfiles/GBV-MIGNewsletter9.pdf>.



# IMMIGRANTS

## | Violence against Immigrant and Visible Minority Women in New Brunswick Research Team

### PRINCIPAL INVESTIGATORS & CO-INVESTIGATORS

- Catherine Holtmann, Sociology, University of New Brunswick
- Tracey Rickards, Nursing, University of New Brunswick

### COORDINATORS (ACADEMIC/COMMUNITY)

- Catherine Holtmann, Academic, Co-chair
- Natasha Aktar, Community, Co-chair

### MEMBERS

- Ginette Gautreau, Executive Director, NB Multicultural Council
- Michelle Hodder, Social Development, Government of New Brunswick
- Nigam Khanal, Domestic Violence Outreach, Liberty Lane, NB Immigrant Women's Association

### ACHIEVEMENTS

This research team did not meet during 2021-2022 due to Dr. Cathy Holtmann's involvement with the project led by Evangelia Tastsoglou.

# LAW

## | Supporting the Health of Survivors of Family Violence in Family Law Proceedings

### PRINCIPLE INVESTIGATORS & CO-INVESTIGATORS

- Peter Jaffe
- Katreena Scott
- Karla O'Regan (NB Team)

### COORDINATORS

- LA Henry (NB Team Project Coordinator)

### MEMBERS

- Cathy Holtmann, Muriel McQueen Fergusson Centre for Family Violence Research
- Sheila Burt, Muriel McQueen Fergusson Centre for Family Violence Research

### COLLABORATORS

- Centre for Research & Education on Violence Against Women & Children, University of Western Ontario
- FREDA Centre for Research on Violence Against Women and Children, University of British Columbia
- RAIV: Recherches appliquées, interdisciplinaires sur les violence intimes, familiales et structurelles, Université du Québec à Montréal
- RESOLVE: Research & Education for Solutions to Violence & Abuse, University of Manitoba

### STUDENTS

- Kelly Brennan, University of Ottawa, Faculty of Law
- Anna Fusco-Virtue, University of New Brunswick, Faculty of Law
- Elizabeth Matheson, Dalhousie University, Faculty of Law

### ACHIEVEMENTS

The project has established one of five regional Communities of Practice (CoP) across Canada, each composed of key stakeholders in the family violence and family law sectors. The Atlantic CoP has a diverse membership, including family law lawyers, social workers, addictions and mental health counsellors, medical practitioners, law enforcement, and frontline specialists in transitional housing and IPV emergency intervention. During the reporting period, the Atlantic CoP expanded to include members from Nova Scotia and will extend this scope to the remaining Atlantic provinces over the course of the next year. The research team produced two research briefs, "Trauma-Informed Approaches to Family Violence in Family Law" and "Family Law Mediation in Family Violence Cases: Basics & Best Practices," as well as two webinars "Mediation and Family Violence in Family Law" and "The Nexus of Poverty and Domestic Violence in Family Law." The project's webinars have been granted CPD credit from the Law Society of New Brunswick, with an estimated reach of 300 family law lawyers during the reporting period.

# LAW

## | Centre for Criminal Justice Studies, UNB Saint John

### PRINCIPLE INVESTIGATORS & CO-INVESTIGATORS

- Mary Ann Campbell, PhD

### STUDENTS

- Lena Gryshcuk, MA, PhD Clinical Psychology Student
- Jay Nero, PhD Clinical Psychology student
- Erin Smith, MA Experimental Psychology student
- Hannah Stewart, PhD - Clinical Psychology PhD Student (now graduated)
- Erin deJong, PhD. - Clinical Psychology PhD Student (now graduated)

### ACHIEVEMENTS

We are just beginning a SSHRC PDG with Dr. Zoe Hilton that will collaborate with several police organizations across Canada to study risk communication in the context of IPV, and develop a common language for this process that is independent of risk tools used. This research will also enhance the ODARA as a risk assessment instrument by evaluating the benefit of adding addiction risk factors, such as coercive control and animal abuse. This research will advance our capacity to effectively appraise IPV risk and inform intervention and risk mitigation responses that involve police.

We have also been working on identifying diverse profiles of female IPV abusers to better understand the heterogeneity within this group and continue to assess the best practices for appraising risk of IPV among female perpetrators. A manuscript based on this research is in development.

One of our recent graduates, Dr. Hannah Stewart, examined profiles of adult males reporting sexual interest in children who have not engaged in criminal activity and identified biopsychosocial needs of this population to inform intervention, that has the potential to risk mitigation of sexual abuse for those vulnerable to acting on their interests. A manuscript based on this research is in development.

# RELIGION

## | Religion and Violence Research Team

### PRINCIPAL INVESTIGATORS & CO-INVESTIGATORS

- Catherine Holtmann, Department of Sociology, University of New Brunswick
- Steve McMullin, Acadia University, Wolfville, Nova Scotia)
- Nancy Nason-Clark, Department of Sociology, University of New Brunswick

### COORDINATORS

- Catherine Holtmann, Academic Coordinator

### COLLABORATORS

- Hamdi Fannoush, Arabic Cultural Centre, Fredericton
- Khaldoun Arwaneh, Arabic Cultural Centre, Fredericton
- Iman Helmy, Arabic Cultural Centre, Fredericton
- Mohammed Baobaid, Muslim Resource Centre for Social Support and Integration, London, Ontario

### STUDENTS

- Jolyne Roy, doctoral student in Sociology, University of New Brunswick
- Misha Maitreyi, doctoral student in Sociology, University of New Brunswick
- Zainab Al-Muttairi, nursing student, University of New Brunswick

### ACHIEVEMENTS

The RAVE (Religion and Violence e-Learning) website ([www.theraveproject.org](http://www.theraveproject.org)) is an important component of knowledge translation and online training for religious leaders and students in academic courses. The site includes a blog which is normally updated monthly and is linked to social media via Facebook and Twitter.

The Muslim Family Safety Project is developing a culturally integrative approach to family safety with members of the Muslim and Arab community in Fredericton. The Advisory Committee met monthly via Zoom and includes representatives from the Arabic Cultural Centre, the Fredericton Police Force, Liberty Lane DV Outreach, and the Muslim Resource Centre for Social Support and Integration. The partners carried out a community mapping exercise and the results were compiled into a Research Brief. The Advisory Committee organized a Zoom presentation on "Child Protection Services, Foster Families, and Family Supports for Children with Disabilities." The presentation was delivered by Kathleen Chiasson (child protection worker from Social Development) on June 17, 2021 and featured interpretation in Arabic. There were lots of questions from the 25 participants who appreciated the clarity of the information provided.

# SEXUAL VIOLENCE

Identifying Scripts and Norms Guiding Young Men's Use of Sexual Aggression Against Women (SSHRC Insight Grant, 2021-2025) - This is a continuation of the work "Assessing Strategies of Serial Sexual Assaulters Using Social Media Sources" (O'Sullivan, PI; REB 2019-174)

## PRINCIPLE INVESTIGATORS

- Lucia O'Sullivan

## CO-INVESTIGATORS

- William McIver
- Sandra Byers
- Scott Ronis

## STUDENTS

- Morgan Richard (Graduate Student)
- Katie Cassidy (Graduate Student)
- Laura Coon (Undergraduate Student)

## ACHIEVEMENTS

The team has been active however the report was not received by the publishing date.



# SEXUAL VIOLENCE

## | Maintain: Trauma-informed Principles for Trauma Exposed Workplaces

### EVALUATION TEAM

- Mary C. Milliken, Evaluator
- Cathy Holtmann, Director, Muriel McQueen Fergusson Centre
- Lorraine Whalley, Executive Director, SVN
- Jenn Gorham, Project Coordinator, SVN

### ACHIEVEMENTS

Sexual Violence New Brunswick (SVNB) is in the middle of a five-year (2019-2024) project funded by Women and Gender Equality Canada. The Muriel McQueen Centre for Family Violence Research (MMFC) is a partner on the project and subcontracted Dr. Mary C. Milliken (MCM) to complete the evaluation. SVN has been developing a program designed for like-organizations to review, revise and/or create operational and structural capacity to support their volunteers, staff, management team and oversight bodies in the difficult and demanding work they do. MCM has been working with project staff developing the plan and guide, and will begin working with the organizations involved in the year-long pilot starting in the fall/winter of 2022.

# VIOLENCE ACROSS THE LIFESPAN

New Brunswick Champions for Child Rights Addressing GBV: Community based supports for children and youth project

## PRINCIPAL INVESTIGATOR

- Mary C. Milliken, Research and Evaluation Specialist

## COORDINATOR

- Matt Rogers, Acting Director MMFC

## COLLABORATORS

- New Brunswick Champions for Youth Rights

## ACHIEVEMENTS

The New Brunswick Champions for Child Rights' Board of Directors, with support from a committee of experts in child rights, gender-based violence (GBV), trauma-informed practice and cultural safety, has funding from Women and Gender Equality Canada for a project to co-design, implement, and evaluate a community-based, wrap-around model of care for child and youth survivors of GBV in Fredericton. The project employs a social innovation lab approach and a child rights-based and intersectional lens to center the voices of survivors in the co-design process. The Muriel McQueen Centre for Family Violence Research (MMFC), as a partner on the project, subcontracted Dr. Mary C. Milliken (MCM) to complete the needs assessment portion. MCM will work with the project coordinator, the Monitoring, Evaluation and Knowledge Transfer Unit at UNB, which is responsible for the project evaluation, staff at the Office of the Child and Youth Advocate, and others on the project team to gather, review and analyze data from primary and secondary sources including youth, local service providers, the Boreal Centre, and ACCESS Open Minds. The needs assessment has been designed to provide analysis of promising and best-practices, and gaps and strengths in the community. The results will be used to inform the model design.

# VIOLENCE ACROSS THE LIFESPAN

## | Creating Peaceful Learning Environments Team

### PRINCIPLE INVESTIGATORS

- Ann Cameron, Emerita Professor, University of New Brunswick; Honorary Emerita Professor of Psychology University of British Columbia

### TEAM COORDINATORS

- Elizabeth Gerhardt, University of New Brunswick graduate, Child Studies Lab manager, now studying at Saint Mary's University, Halifax

### MEMBERS

- Nora Didkowsky, PhD, Postdoctoral researcher
- Anne Hunt, University of New Brunswick Honorary Research Associate (former University of New Brunswick MEd student)
- Kang Lee, University of Toronto professor (former University of New Brunswick PhD student)
- Stacey McKay, Fredericton clinician (former University of New Brunswick PhD student)
- Morgan Richard, University of New Brunswick doctoral student

### COLLABORATORS

- Sharon Hales, Teacher, Maple Grove Elementary School, Vancouver VSB
- Linda Ryan, Teacher, Priestman Street Elementary School, (University of New Brunswick graduate student)

### ACHIEVEMENTS

This past two years have been unique in the history of the Creating Peaceful Learning Environments (CPLÉ) team as a result of a significant alteration in the manner in which it has been able to conduct its activities. While we have operated in both New Brunswick and British Columbia with the vastly helpful assistance of digital information systems, when need be for the past year, so all of our work has been conducted on line, bringing both benefits and challenges. As schools at all levels have vacillated between being totally on-line, through hybrid delivery, to in-person delivery, one had not known from month to month what the next month held for us. One of our most exciting projects has had to be put on hold because our participating Indigenous family was hit hard by Covid-19 and had not been in a position to continue with us and will not be available until after the pandemic restrictions have been lifted. And another project with refugee Rohingya children in India and Bangladesh has been on hold, and our Dissemination project supported by the MMFF has developed only slowly as a result of schools irregular attendance procedures.

Our team undertakes numerous quasi-ecological projects around the globe, focusing on resilience of toddlers, kindergarten students in the transition to school, most recently in Brazil and Italy as well as eastern and western Canada, youth and independent elderly adults in Switzerland, Lithuania and



eastern and western Canada, and bring to light findings regarding gendered factors in youth perceptions of intimate relationships and the influence of digital media and relationships.

Ann Cameron coordinates research in collaboration with CPLE team members including current and past UNB and UBC graduate and undergraduate students. New initiatives involve: 1) former UNB doctoral student, Kang Lee, a SSHRC grant-supported cross-cultural study of academic integrity; 2) a new collaborative study in both British Columbia and New Brunswick of the reciprocal learning and teaching of Indigenous knowledge and cultural practices with older and younger non-Indigenous elementary school students and their teachers; 3) A study of pro-sociality of Rohingya children in mega-camps in Bangladesh; and 4) A Muriel McQueen Fergusson Foundation-funded knowledge-dissemination initiative with youth facilitating Confidence in Communications.

We continue to publish and present team findings in community and academic forums nationally and internationally. Our work to date has had an impact on the communities we contribute to by highlighting the importance of gender- and culture-sensitive analyses and interventions. Implications are of significance for schools' violence prevention, socio-emotional development and international youth resiliency.



# WORKPLACE

## Workplace Violence and Abuse Research Team (WVAT)

### COORDINATORS (ACADEMIC/COMMUNITY)

- Nicole Smith, Community Co-Chair
- Shelley Parker, Academic Co-Chair

### MEMBERS

- Shelley Parker, NBPower/University of New Brunswick (Academic Co-Chair)
- Anthea Plummer (Personal)
- Nicole Smith (Personal) (Community Co-Chair)
- Lindsay Manual (WEB)
- Brenda Moore (Personal)
- Angela Leger (Personal)
- Sue O'Donnell, University of New Brunswick
- Bronwen Cunningham, Post-Secondary Education, Training and Labour
- Sheila Burt, Muriel McQueen Fergusson Centre for Family Violence Research
- Debra Ward, University of New Brunswick HRO
- Amber Chisholm, Public Legal Education and Information Service of New Brunswick



Minister of Post-Secondary Education, Training, and Labour, Trevor Holder (left), and Minister of Tourism, Heritage and Culture, Tammy Scott-Wallace (right) sign the declaration that recognizes Respectful Workplace Week from Sept. 6th to 10th in New Brunswick. Back row: Mackenzie Pond and Sheila Burt, members of the WVAT.

## ACHIEVEMENTS

Respectful Workplace Week is the only conference of its kind in New Brunswick and moving to a virtual format has allowed participation to grow exponentially. WVAT hosted Respectful Workplace Week in September 2021. The three day, free, virtual conference averaged over 125 participants per event. This year's theme was "Workplace Wellness: Psychological Health and Safety" and presenters included:

- PLEIS NB presenting Safer Places by Trisha Perry;
- Mental Health Pop-Up Café by Shelley Parker;
- Employee Mental Wellness by Ian Allen;
- Positive Workplace Framework by Bill Morrison;
- Humanity at Work by Pierre Battah.

Respectful workplace week is the only conference of its kind in New Brunswick and moving to a virtual format has allowed participation to grow exponentially. This bilingual series was sponsored by UNB, the Muriel McQueen Fergusson Centre for Family Violence Research, the Fergusson Foundation, the Province of New Brunswick, Infopowered, NBPower and WorksafeNB. An Arts 4000 intern was hired to assist with the coordination of the event. Each session was recorded, posted to youtube and can be accessed through the MMFC website at <https://www.unb.ca/mmfc/education/events.html>.

PLEIS delivered a number of their "Safer Places" sessions between 2020 and 2021, launched an asynchronous online version and on March 2, 2021 hosted a public launch of the website and associated resources.

Nicole Smith, of Nicole Smith Conflict Management, delivered her sessions "Understanding Workplace Harassment" and "Working With Your Harassment Code of Practice" to groups from the small business and non-profit sectors.



# RESEARCHERS AND FELLOWS OF THE MMFC



DR. CHANTAL BOURRASSA



DR. CASEY BURKHOLDER



DR. ANN CAMERON



DR. MARY-ANN CAMPBELL



DR. DIANE CROCKER



DR. SHELLEY DELANO PARKER



DR. DAVID HOFMANN



DR. CATHY HOLTMANN



DR. MAYME LE FURGEY



DR. MARY C. MILLIKEN



DR. LINDA C. NEILSON



DR. KARLA O'REGAN



DR. LUCIA O'SULLIVAN



DR. KELLY SCOTT-STOREY



DR. EVIE TASTSOGLOU



DR. PETREA TAYLOR



DR. ARDATH WHYNACHT



DR. LAURA WINTERS



DR. ANGELA WISNIEWSKI



DR. ALEXA YAKUBOVICH

## DR. CHANTAL BOURRASSA

---

Dr. Chantal Bourassa is a faculty member at Université de Moncton in the Faculty of Arts and Social Sciences. Her fields of specialization include: Qualitative research methodology; contemporary approaches in social work; program evaluation; maternity and paternity in contexts of vulnerability; childhood and adolescence; marital and family violence; interventions with men and fathers with violent behavior.

## DR. CASEY BURKHOLDER

---

Dr. Casey Burkholder is an Associate Professor at the University of New Brunswick, interested in critical teacher-education, and participatory visual research. In choosing a research path at the intersection of resistance&activism, gender, sexuality, DIY media-making, art production and participatory archiving, Casey engages in research for social change through participatory visual approaches to local issues with youth and pre-service teachers. She is the co-founder of the Fredericton Feminist Film Collective, and is the co-president of the Language & Literacy Researchers of Canada (2021-2023).

## DR. ANN CAMERON

---

Dr. Cameron studied at the University of British Columbia and the University of London subsequent to her postdoctoral research at Dalhousie University. She conducted research for many years at the University of New Brunswick, studying the acquisition of thought, language, and related psychosocial processes in children and youth. She currently conducts research at UBC as an Honorary Emerita Professor of Psychology and UNB as an Honorary Research/Emerita Professor. Dr. Cameron's early studies of young children's cognition have broadened to include: Cross-cultural studies of lying and truth telling, honesty and trust and intellectual integrity; emergent literacy; communications; young children and teens' humour; cultural studies of early years thriving, adolescent and older adult resilience; and psychosocial stress reactivity.

## DR. MARY-ANN CAMPBELL

---

Dr. Campbell (Ph.D. Dalhousie) is a Full Professor in the Psychology Department at the Saint John Campus of the University of New Brunswick. Her main area of research focuses on developing and enhancing the application of evidence-based strategies for crime prevention and reduction. To date, Dr. Campbell's research has included the study of criminal behaviour committed by adults, youths, and special populations (e.g., persons with mental health issues); understanding the psychopathic personality through its measurement and various manifestations in offender and general populations; enhancing positive outcomes for justice-involved youth through evidence-based practice; and the evaluation of intervention programs aimed at crime prevention and risk reduction goals (e.g., mental health courts, chronic offender interventions, drug-treatment programs).

Another related area of interest pertains to police psychology. Dr. Campbell has been involved in projects evaluating the implementation of intelligence-led policing, application of community policing principles, and the enhancement of best practices in police work (e.g., police responses to intimate partner violence, credibility assessment methods).

In addition to her research and training activities, Dr. Campbell is a clinical psychologist in New Brunswick and Nova Scotia and provides consulting services to various community, government, and policing agencies on matters pertaining to criminal behaviour, violence, and mental health. She is an invited member of the Government of New Brunswick's Roundtable on Crime Prevention and Public Safety, which informed this province's strategy on crime prevention and reduction.

## DR. DIANE CROCKER

---

Dr. Diane Crocker is a Professor and Chair in the Department of Criminology at Saint Mary's University in Halifax. Diane's research focuses on gender-based violence and restorative justice. In recent years most of her research has addressed campus sexual violence policies and domestic violence prevention.

## DR. SHELLEY DELANO PARKER

---

Shelley is an industrial psychologist specializing in health & safety applied research. She is a contract academic instructor at UNB. Her areas of expertise are employee stress, and health & safety strategy improvements. Shelley is a long standing member of the Workplace Violence and Abuse research team.

## DR. DAVID C. HOFMANN

---

Dr. David C. Hofmann is an Associate Professor of Sociology and the Director of the Criminology and Criminal Justice Program at the University of New Brunswick Fredericton Campus. He is a nationally-recognized expert on far-right extremism and violence, and has extensive experience conducting funded research in this area with governmental partners such as Public Safety Canada, National Defense, and Defense Research and Development Canada. He is the co-lead on the multi-year government funded Network for Research on Hateful Conduct and Right-Wing Extremism in the Canadian Armed Forces which is studying the breadth, depth, and extent of far-right worldviews and ideologies in the Canadian military. David is also a research fellow with the Gregg Centre for the Study of War and Society.

David's current research interests are focused on five broad areas: terrorism and political violence, charismatic leadership, right-wing extremism, apocalyptic and millenarian groups, and criminal & illicit networks. David is a mixed methodologist, with a particular interest in social network analysis. Given the culture of toxic masculinity that often goes hand-in-hand with groups and individuals involved in right-winged extremist groups, it is an environment where Intimate Partner Violence/ gendered violence is likely to thrive. David is interested in incorporating an exploration of the relationship between right-wing extremism and IPV/gender violence into his research.

## DR. CATHY HOLTSMANN

---

Cathy is the Director of the Muriel McQueen Fergusson Centre for Family Violence Research (MMFC). She is the academic co-chair of the Religion and Violence as well as the Violence against Immigrant and Visible Minority Women research teams at the Centre. Her research focuses on gender and religion, domestic violence, immigrant women, and social action. She is a co-investigator with the Canadian research team on the project Violence Against Women Migrants and Refugees: Analyzing Causes and Effective Policy Response and represents the MMFC on the New Brunswick Roundtable on Crime and Public Safety. Cathy utilizes both quantitative and qualitative methods in her research. She has taught undergraduate courses for over twenty years and teaches an online course in the Family Violence Issues Certificate Program.



## DR. MAYME LEFURGEY

---

Mayme Lefurgey is a postdoctoral fellow at the Muriel McQueen Fergusson Centre for Family Violence Research and the Department of Sociology at the University of New Brunswick. She holds a Ph.D. in Gender, Sexuality & Women's Studies (collaborative program in Transitional Justice & Post-Conflict Reconstruction) from Western University. Mayme's doctoral research explored trauma-informed, relational and embodied approaches to addressing violence—including wartime violence, structural/systemic violence, family violence and gender-based violence in post-conflict Colombia in collaboration with the non-profit peacebuilding organization Dunna.

Mayme is UNB's Purdy Crawford/TD Bank Fellow in Accessibility (2021-2023)—a fellowship that supports applied research with immediate public policy relevance and impact on the lives of New Brunswickers. Her research considers the urgent need to understand how different forms of inequality intersect with and interact within the socio-political and economic contexts in New Brunswick.

More precisely, her postdoctoral work considers the need to understand how the COVID-19 pandemic has exacerbated and altered existing barriers for women and gender-diverse people who are accessing services and supports related to intimate partner violence and gender-based violence in the province.

She is also involved in community-based research with the organization, CBDC Restigouche in Campbellton, NB on the projects, "Disability and the Workplace: Challenges, trends, and best practices among SMEs in Canada" (funded by the Opportunities Fund for Persons with Disabilities) and "Bridging the Gaps: A feminist response to pandemic recovery for small businesses in the Restigouche, N.B. and Avignon, Q.C. regions" (funded by Women and Gender Equality Canada).

Mayme is an appointed member of the New Brunswick Women's Council and serves as the Director of Research and Policy for the non-profit organization, PINK Concussions and sits on the organization's Partner-Inflicted Brain Injury Task Force.

## DR. MARY C. MILLIKEN

---

Dr. Milliken works with the MMFC collaborating with multiple stakeholders on various family violence-related projects. With a background in sociology she provides sound qualitative research and project coordination skills to funding applications, research projects, events, and project or program evaluations. Passionate about social justice and gender-equality, Mary works with other non-profits, research institutes, government departments or agencies, academic institutions and private businesses.

## DR. LINDA C. NEILSON

Dr. Neilson is a Professor Emerita in Sociology and Law In Society at UNB. She holds two degrees from UNB - BA (Hons) and LLB - as well as a PhD from the Faculty of Law, University of London (London School of Economics) in England. Earlier, she practiced law for 10 years. Her academic fields include domestic and family violence, court systems, family law, conflict resolution and sociology of law. She is a recipient of national awards for family mediation research, Faculty Merit awards from UNB, and was appointed University Research Scholar in 2011-2013. Linda brings to her work a dedication to the legal system and a passion for connecting research, policy and practice. In recent years her primary focus has been on enhancing legal system responses to families, women and children, in family violence cases. Throughout her career, she served on numerous government committees, including the committee that designed New Brunswick's first specialized domestic violence court in Moncton, New Brunswick. She has responded to multiple requests from the Canadian House of Commons and Canadian Senate to comment on proposed legislation. She supervised numerous graduate students and presented her work internationally. Although officially 'retired' in 2016, she has continued to work in the family violence field.

## DR. KARLA O'REGAN

Dr. O'Regan is an Associate Professor of Criminology at St. Thomas University and a part-time lecturer in the Faculty of Law at UNB.

A graduate of St. Thomas University, Karla has law degrees from the University of Toronto, Dalhousie University, and the London School of Economics. She is a member of the Law Society of Upper Canada and has worked for the Federal Department of Justice, Ontario's Office of the Children's Lawyer, and the private legal sector. Karla served as a

Complaint Officer under St. Thomas University's Harassment & Discrimination Policy for five years and chaired the University's Research Ethics Board from 2014-2018. She acts as a project supervisor for Pro Bono Students Canada and is a (faculty-elected) member of St. Thomas University's Board of Governors. Dr. O'Regan also serves on the NBCC Research Ethics Board and has acted on a number of community and regional Boards of Directors, including the Fredericton SPCA, Dialogue NB, and the Maritime Provinces Higher Education Commission. She is currently working with the Fredericton Sexual Assault Centre and the Fredericton Police Force on a case audit of unfounded sexual assault files. Her book, *Law & Consent: Contesting the Common Sense* (Routledge) published in Spring 2019.



Dr. Karla O'Regan at her book launch.

## DR. LUCIA O'SULLIVAN

---

Dr. O'Sullivan is a social psychologist and Professor in the Department of Psychology at the University of New Brunswick. She is also the director of the Sex and Relationships Lab.

Her work focuses primarily on sexual health, intimate relationships, and the affective and cognitive components of sexual decision-making of young adults and adolescents. She held a Canada Research Chair in Adolescents' Sexual Health Behaviour (2006-2016) and has received a wide range of funding from federal agencies (e.g., NIH, CIHR, SSHRC) and private foundations (e.g., Ford, NBHRF) to support her work. Other studies address the development, maintenance, and breakup of intimate relationships, as well as the role of gender in romantic and sexual experiences. Dr. O'Sullivan's research program frequently incorporates studies and collaborations that are international (e.g., South Africa, Guatemala, India, US, UK) and interdisciplinary.

Dr. O'Sullivan is active on a wide range of editorial boards, is Associate Editor of the Journal of Sex Research, and has published extensively in research journals and books. Her research has appeared in the Globe and Mail, National Post, and CBC.

## DR. KELLY SCOTT-STOREY

---

Dr. Kelly Scott-Storey is a health researcher and associate professor in the faculty of Nursing, director of community research, scholarship and teaching at the Fredericton Downtown Community Health Centre. Dr. Scott-Storey's research interests are in the intersection of violence, gender and health.

She is a co-Principal Investigator on a national randomized controlled trial (iCAN plan 4 safety; CIHR \$959,650) aimed at exploring the use of an innovative tailored and personalized on-line health and safety intervention for women experiencing intimate partner violence (IPV). Based on the success of the trial, the team sought to increase reach by transitioning the web-based platform to a more accessible app. The timeline to develop the app was expedited at the request of federal partners recognizing the urgent need for such a tool to support women experiencing IPV during COVID-19, when incidences of violence were increasing and access to supports and services were reduced. In response, the myPlan Canada app was launched in July 2020, and is available free of charge in Canada through the Apple Store and Google Play.

Dr. Scott-Storey holds approximately \$4.5 million in research funding, and in addition to the iCAN trial is also a PI on a large, multi-provincial randomized controlled trial (the iHEAL study) aimed at testing the effectiveness of a nurse-led health promotion intervention for women who have experienced IPV. Additionally, she is a PI on a 5-year CIHR Operating Grant and two NBHRF grants examining men's experiences of cumulative lifetime violence and the intersection of gender and health. She has been actively involved in trying to better measure and capture experiences of interpersonal violence for both women and men, and is part of an international team who developed a short version of the Composite Abuse Scale (CASR-SF) which is currently being used by Statistics Canada.

## DR. EVIE TASTSOGLOU

---

Dr. Evangelia Tastsoglou is a Professor at the Department of Sociology, cross-appointed to the International Development Studies Program at Saint Mary's University in Halifax, Nova Scotia. With sociological and legal training Dr. Tastsoglou has over twenty five years of expertise in working with gender and immigrant women in Canada and internationally. As founder and leader of the Gender Domain of the Atlantic Metropolis Centre of Excellence (2003-2013) she led multiple projects on various aspects of migration with a gender-based and intersectional analysis. Past Chair of her Department (2006-2012), President Elect and subsequently President of the RC 32 ("Women in Society") of the International Sociological Association (2006-2014), member of the ISA Executive Committee and Research Council (2014-2018), and current President of the Canadian Ethnic Studies Association, she focuses her research on sexual and gender based violence and precarity during forced migration.

Dr. Tastsoglou is currently the principal investigator of the Canadian team (4 investigators / 4 institutions) of the CIHR-funded project "Violence against women migrants and refugees: Analysing causes and effective policy response". This is part of the similarly titled international project developed in response to the GENDER-NET Plus Co-funded call. In addition she is currently the PI of a SSHRC-funded project focusing on sexual and gender based violence and precarity during forced migration in the Eastern Mediterranean, comprising a team of academics from Canada and Greece.

## DR. PETREA TAYLOR

---

Dr. Petrea Taylor is an Assistant Professor with the Faculty of Nursing (FON), UNB. Her program of research is gender, violence, and health, with a particular interest in women's mental health, suicidality, and stigma. While working as a clinical nurse specialist in Addictions and Mental Health, Horizon Health Network, Petrea completed (2018) with an Interdisciplinary PhD (Nursing, Sociology, Philosophy). Upon graduating, Petrea accepted a post-doctoral fellowship with supervisor Dr. Kelly Scott-Storey as a post-doctoral fellow funded by CIHR on a Men's Gender Violence and Health Study (MGVHS). In January 2020, Petrea was hired with the FON Accelerated Program at the UNB Moncton site in her hometown.

Current research includes a study about how women with suicide ideation promote their health funded by UNB and the New Brunswick Health Research Foundation. Petrea is eager to supervise students with an interest in social justice, social determinants of health, critical theory underpinnings, qualitative methods, women's health, help-seeking, mental health, suicide, stigma, and violence.

## DR. ARDATH WHYNACHT

---

Dr. Ardath Whynacht (she/her) is an Associate Professor of Sociology and Director of the Interdisciplinary Health Studies Program at Mount Allison University. She writes and researches with survivors of family and state violence and has 20+ years of experience working in the field of gender-based violence with both survivors and offenders. She has worked as a frontline Victim Service worker, a youth support worker for teens coming out of juvenile detention and a program facilitator with men and women in the Federal prison system. She has worked in Bosnia as a disarmament educator and has experience working with both local and international NGOs on anti-violence campaigns. Her research considers the role of healthcare and legal institutions in responding to the harms of violence, with attention to the role of community-based organizations in offering non-carceral approaches to violence, distress and self-harm. Her recent book, *Insurgent Love: Abolition and Domestic Homicide* explored transformative and non-carceral approaches to supporting family violence survivors who are at high-risk for homicide and recently won the Atlantic Book Award for Scholarly Writing. She lives and teaches on unceded Mi'kmaw territory.

## DR. LAURA WINTERS

---

Dr. Winters is the Executive Director of the St. John's Status of Women Council and Women's Centre, a feminist organization that does direct service provision and public advocacy work around gender equality in St. John's, Newfoundland. She is also a sociologist who researches stigma resistance, especially in the everyday "talk back" of people who do sex work. Laura is especially interested in Community Action Research; she believes there is a need to think critically about research ethics in the context of research as advocacy with marginalized populations. She is currently the supervisor for the DV@WorkNL research project - a federally and provincially funded community research project on the impacts of domestic violence on workers, co-workers, and work places: <https://sjwomenscentre.ca/dvatworknl/> As a community worker, academic and activist, all Laura's work is rooted in the prioritization of the voice of lived experience and the pursuit of social justice.

## DR. ANGELA WISNIEWSKI

---

Angela is an Assistant Professor at St. Thomas University where she works in the Communications and Public Policy Program. Angela's current research projects involve science and communication and public consultation in the fields of science and technology policy. Angela first became involved in the Rural Realities project as a graduate researcher, because of her interests in women's rights and in the project's community-based research approach.



## DR. ALEXA YAKUBOVICH

---

Dr. Alexa Yakubovich is an Assistant Professor in Community Health and Epidemiology at Dalhousie University (cross-appointed in Gender and Women's Studies) and Affiliate Scientist with Nova Scotia Health. Dr. Yakubovich's mixed-methods research program includes investigations of the social and structural determinants of violence against women and the design and evaluation of interventions that account for these determinants. She received her PhD in Evidence-Based Social Intervention from the University of Oxford as a Rhodes Scholar and completed her postdoctoral fellowship, funded by the Canadian Institutes of Health Research (CIHR), at the University of Toronto and St. Michael's Hospital, where she remains an Affiliate Scientist.



“ Work at the Muriel McQueen Fergusson Centre has many forms. From research projects to webinars to short films, every project has a unique perspective and takes on different issues revolving family violence. Our work here at the centre is a joint effort by committed and talented students, faculty colleagues, and community partners who seek to give their best to address important issues in our society. ”

Sheila Burt, Acting Associate Director of the MMFC

WORKING TOGETHER TO FACILITATE  
CHANGE





# COMMUNITY INVOLVEMENT

As part of our ongoing commitment to the community, staff and other representatives of the MMFC work with many community stakeholders and serve on committees and advisory groups namely:

Alliance of Canadian Research Centres on GBV	Matt Rogers
DIPV Violence in the Workplace Provincial Committee	Sheila Burt
Fierte Fredericton Pride	Caen Squires
Fredericton Regional Resource Network	Alison Meng
Institute and Research Centre Round Table	Matt Rogers
International Human Rights Committee-Interpride	Caen Squires
Love Shouldn't Hurt Campaign – Advisory Committee	Sheila Burt
NB Child Sexual Harm Task Force	Sheila Burt
NB Roundtable on Crime and Public Safety	Mayme LeFurgey   Sheila Burt
NB Working Group on Human Trafficking	Angela Wisniewski
Silent Witness Program	Sheila Burt
The 203 Centre for Gender and Sexual Diversity	Caen Squires
UNB PTSU Health and Wellness Working Group	Sheila Burt (co-chair)
UNB/STU/NBCC University Women's Centre Board	Ewos Emiko
UNB Campus Sexual Assault Prevention Team	Morgan Richard
UNB Sexual Assault Policy Review Committee	Cathy Holtmann
Vice-President Research Policy Committee	Matt Rogers



# COMMUNITY

---

## WORK HIGHLIGHTS



### ALLIANCE OF CANADIAN RESEARCH CENTRES ON GENDER-BASED VIOLENCE

This committee met quarterly through the year to discuss the Canadian context of Gender-based violence research. The committee also prepared a Written Brief to the Standing Committee on the Status of Women for the Study on Intimate Partner and Domestic Violence in Canada. The Standing Committee on the Status of Women tabled its report to the House of Commons on June 17th, 2022. The Alliance's brief informed parts of the report, which was entitled Towards a Violence-Free Canada: Addressing and Eliminating Intimate Partner and Family Violence.

The Alliance represents the partnership and collaborative research & education initiatives among these centres:

- The Centre for Research & Education on Violence against Women and Children (CREVAWC)
- The FREDA Centre for Research on Violence against Women and Children
- RESOLVE: Research and Education for Solutions to Violence and Abuse - Alberta
- RESOLVE: Research and Education for Solutions to Violence and Abuse - Manitoba
- RESOLVE: Research and Education for Solutions to Violence and Abuse - Saskatchewan
- RAIV: Recherches Appliquées et Interdisciplinaires sur les Violences intimes, familiales et structurelles



## DIPV IN THE WORKPLACE PROVINCIAL COMMITTEE

This year the committee completed the strategic planning exercise which re-affirmed the mandate, examined the structure, and determined the strategic goals including sustainability models for the work of the committee. In early March, the committee submitted a funding request proposal to the Women's Equality Branch and was successful in their application. The funding will support a full time Program Development Officer for one-year to operationalise the strategic plan with a focus on financial planning, fundraising and stakeholder engagement.

Social media campaigns have continued throughout the year directed to employers and employees to promote the newly revised toolkit. Promotional costs were covered through the support of Safer and Stronger grant monies received by the MMFC and Fergusson Foundation. The committee delivered several webinars and provided training as requested throughout the year.

## FREDERICTON REGIONAL RESOURCE NETWORK

The Fredericton Regional Resource Network (FRRN) continues to meet monthly, with the meetings being held online using Zoom. Currently, there are over 30 members in the network, with new members and organizations joining every month.



The meetings begin with an update from each member and organization. Updates that were shared during previous meetings included new hires such as summer students and interns, upcoming training opportunities, presentations, and events or campaigns. The monthly meetings also offer members an opportunity to advertise upcoming research projects or studies and to share ideas for recruitment. For instance, one member expressed that they were in the process of recruiting young adults for focus groups. Other members of the network were able to offer advice and suggestions to this member for where to recruit participants, including reaching out communications representatives at the University of New Brunswick and St. Thomas University.

The MMFC advertised various webinars that were being offered as well as the new online course "Essential Skills for Interviewing Children." In addition, the centre also shared advertisements for various projects and workshops being hosted by the research teams and committees associated with the MMFC. The MMFC is excited to continue being a part of the network.

## INSTITUTE AND RESEARCH CENTRE ROUND TABLE

The roundtable committee meets monthly to discuss issues that impact the operations of UNB institutes and centres. Throughout the year, members of the committee shared information about the work and research of each of their entity. The meeting also provided a venue for directors to meet with UNB administration.

## LOVE SHOULDN'T HURT CAMPAIGN - ADVISORY COMMITTEE

The Love Shouldn't Hurt campaign is New Brunswick's intimate partner violence education and awareness campaign. Guided by its Advisory Committee, the campaign aims to reframe intimate partner violence as a social issue that everyone can play a part in putting an end to, create a social environment that supports and encourages behavioural change, and to increase awareness of services and supports that are available.

This year, the campaign focused efforts on expanding the reach of the campaign in rural areas by decaling Justice and Public Safety vehicles with Love Shouldn't Hurt's logo and developing content on the concurrence of mental health and substance use and intimate partner violence. These priorities were identified by New Brunswick's Domestic Violence Death Review committee in recent years as opportunities to prevent intimate partner violence and intimate partner homicide in the province.

Love Shouldn't Hurt set out this year to reach 90 000 New Brunswickers, which would represent a 25% increase in engagement. After another successful year the campaign reached over 243 000 people, representing a 306% increase. The success of Love Shouldn't Hurt would not have been possible without Champions and Volunteers across the province who promote resources and awareness in their area, or Kali O'Dell, Love Shouldn't Hurt's coordinator. You can find Love Shouldn't Hurt on Facebook, Twitter and Instagram or by visiting [www.gnb.ca/violence](http://www.gnb.ca/violence).



## NB CHILD SEXUAL HARM

**Task Force** - In December 2019, the Roundtable on Crime and Public Safety directed a task force be established to prioritize and implement recommendations outlined in the needs analysis and best practices review prepared by the Child Sexual Abuse Advisory Committee. The report was released to the public in February 2022 and can be accessed from the GNB website: <https://www2.gnb.ca/content/dam/gnb/Departments/ps-sp/pdf/Publications/review-child-sexual-harm-nb.pdf>.

The Task Force has been meeting regularly under the leadership of the co-chairs from Social Development, Executive Council Office - Women's Equality Branch, Sexual Violence New Brunswick and Justice and Public Safety. The Task Force implemented a framework for the prioritization the 24 recommendations in to short, mid and long-term goals and working groups have been formed to address specific recommendations. Members of the task force continue to prioritize and implement recommendations from the review, connect to existing work and report back to the Roundtable on progress.

## NB ROUNDTABLE ON CRIME AND PUBLIC SAFETY

This is a collective decision-making body that brings together more than 40 member organizations (including the MMFC) to implement a comprehensive Crime Prevention and Reduction Strategy based on proven practices through planning, education, coordination, innovative leadership and evaluation.

The Roundtable has three priority areas: Domestic and Intimate Partner Violence (DIPV), Chronic Repeat Offending, and Vulnerable Youth. Over the last year, the Roundtable has continued to coordinate efforts to prevent and reduce crime and victimization in New Brunswick.





## SILENT WITNESS PROJECT

The New Brunswick Silent Witness Project is an exhibit of life-sized red silhouettes representing New Brunswick women who have died tragically at the hands of an intimate partner since 1990. Each life-sized red silhouette represents a woman who once lived, worked, and played amongst us. They were daughters, sisters, mothers, aunts, friends, neighbours and employees. Because these women no longer have a voice, the silhouettes are called the Silent Witnesses. However, by listening to their stories and honouring their lives, they have a strong, clear collective voice that helps all of us to explore ways to create awareness and prevent future domestic deaths.

### Project Objectives:

**To remember...**by honouring women in New Brunswick who were murdered by a spouse, partner or acquaintance.

**To create awareness...**by sharing information in communities around the province about the nature and extent of family violence.

**To promote action...**by profiling local resources that support women coping with violence in their lives and encouraging community and government action to end all forms of violence in our society.

The Committee met several times over the past year to discuss and identify opportunities to increase awareness and to honour the lives of women who were killed in acts of domestic violence.

The NB Silent Witness committee continues to work with communities, agencies, friends and families in the creation of silhouettes to honour women who were killed by their partners. For a list of the women we honour, please see visit the website at: <http://www.silentwitness.ca/index.php?page=women-we-honour>.

## UNB/STU/NBCC UNIVERSITY WOMEN'S CENTRE BOARD

Ewos Emiko, Communications and Media Production Assistant and Arts 4000 Intern, was the MMFC's representative on the Board of the UNB Women's Center. Ms. Emiko participated in meetings on October 21st 2021, and March 3 2022 where activities relating to Center operations, governance, volunteer participation, and sexual violence awareness events were discussed.



## UNB CAMPUS SEXUAL ASSAULT PREVENTION TEAM

Over the 2021-22 academic year, the Tri-Campus Sexual Violence Prevention Team met monthly to discuss and organize efforts towards preventing sexual violence on campus. This year in partnership with Bison FilmWorks and the Fergusson Foundation, Sexual Violence New Brunswick (SVNB) produced a short film to address the impacts of sexual violence on campus. This film will bring awareness about the secondary harm that can be caused through a survivor's help-seeking journey. The film will soon be available to the public.

In other activities, a virtual panel event was held to bring awareness to sexual health, consent, and sexuality for campus students entitled 'Not Your Highschool Sex-Talk'. Panelists for this event included representatives from the Campus Sexual Assault Support Advocate office (CSASA), Student Health, White Ribbon Fredericton, and the 2SLGBTQIAP+ community.

Looking forward, CSASA is developing new sexual violence awareness campaign materials for promotion in the upcoming academic year. CSASA has developed bystander training that is available to complete virtually for students on campus to help direct campus-wide efforts to prevent sexual violence. As part of the tri-campus sexual violence strategy, SVNB will host a training session this summer designed to help faculty and staff on campus feel confident in receiving disclosures of sexual violence and understanding their role in supporting student survivors.

## VICE-PRESIDENT RESEARCH POLICY COMMITTEE

*On conflict of interest, disclosure of financial interests, and integrity in research and scholarship*

The Committee examines and make recommendations to the Vice-President (Research) on related policies and procedures on the following: disclosure of financial interests related to professional and scholarly activity; conflict of interest; and, Integrity in research and scholarship. The committee met multiple times over the year to review policy and procedure draft documents.





# EDUCATION

## FAMILY VIOLENCE ISSUES CERTIFICATE PROGRAM

The MMFC continues to offer the Family Violence Issues Certificate as a multidisciplinary set of courses offered through departments of the Faculty of Arts.

A concerted effort was set on promoting the program this year and has seen an increased level of interest. The Family Violence Issues Certificate has produced 4 graduates and accepted 6 new students this year.

SOCI 2003/FVI 2003 Interpersonal Cyberviolence was added to the Core curriculum as of January 1st 2022, and is a welcome addition to the growing pool of the Certificate's web-based courses.

### Course Description:

This course address and identifies gender stereotypes that directly lead to gender-based cyber violence and the ways in which these ideologies set the stage for victim blaming discourses. Within this course you will learn about gender hate speech, cyber exploitation and blackmail, non-consensual intimate photo sharing, misogyny, swatting, doxing, trolling, etc.

Students who enrol in the FVI complete eight courses related to the study of family violence choosing courses from three different categories.

Core courses: All the material in these courses relates to the study of family violence. Students must take a minimum of three core courses, many of which are available [online](#).

Intensive courses: 60% of the material in these courses relates to family violence. Students can take a maximum of three intensive courses. An Arts Internship (Arts 3000) with an agency or government department related to the family violence field is included in the list of intensive courses.

Supplementary courses: At least 30% of the course material relates to family violence. Students take a maximum of 3 supplementary courses from a list of almost 50 courses.

For a description of the [FVI Certificate Program](#) and complete listing of courses refer to the undergraduate calendar.



## ESSENTIAL SKILLS FOR INTERVIEWING CHILDREN COURSE

This year the MMFC was excited to launch, in partnership with the Centre for Investigative Interviewing (Griffith University), a new on-line professional development course: Essential Skills for Interviewing Children .

This self-paced course is the culmination of over 12 years research and development by the Centre for Investigative Interviewing (CII). The CII is a global leader in the field of interviewing children.

The training is relevant for professionals working with vulnerable persons in the sectors of domestic violence, sexual violence, child protection, criminal justice, education, healthcare, and more.

The course takes 35-45 hours and focuses on the 'how to' of interviewing children for professional investigation purposes (e.g., abuse investigation, non-criminal wrongdoing, medical decisions). It is practical and interactive in nature, including a child avatar, films, quizzes, webinars, and one-on-one sessions (over the phone or web) with a trainer. A certificate is provided on completion.

The course focuses on the questioning strategies needed to: build rapport, encourage disclosures, keep the child talking (and steer them towards providing important details while minimizing error), and make the interview as stress-free as possible. The following modules are included:

**Module 1:** Establishing 'best practice' in interviewing children

**Module 2:** Defining the various questions

**Module 3:** Understanding memory and language development

**Module 4:** Choosing the most effective open-ended questions

**Module 5:** Putting the right questions into practice

**Module 6:** Introducing the topic of concern

**Module 7:** Introducing an interview protocol



Muriel McQueen  
Fergusson Centre  
for Family Violence Research



Centre Muriel  
McQueen Fergusson  
pour la recherche sur la violence famili



For more information visit [www.unb.ca/mmfc-online](http://www.unb.ca/mmfc-online) or email us at [fvrc@unb.ca](mailto:fvrc@unb.ca).





## KEYNOTE ADDRESSES & INVITED PRESENTATIONS

---

Burkholder, C. (2021). Cellphilms and participatory archives. Invited talk at McGill University, Montreal, Quebec. June.

Burkholder, C. (2021). Working with 2SLGBTQ+ Atlantic Canadian communities' to explore experiences, and co-create archives, art and activism. Invited talk at the University of Prince Edward Island. October.

Burkholder, C., Batt, M., Squires, C. & Thorpe, A. (2021). New Brunswick queer histories matter. June <https://tinyurl.com/nbqueerhistories>.

Burkholder, C. (2022). Participatory visual research for social change [for Dr. Gigi Luk]. Invited lecture at McGill University, Montreal, Quebec. February.

Burkholder, C. (2022). Participatory visual research for social change. [for Dr. Christina Flemming]. Invited lecture at Acadia University, Wolfville, Nova Scotia. March.

Burkholder, C. (2022). Visual research methods in a research for social change framework. [for Dr. Christina Flemming]. Invited lecture at Mount Saint Vincent University, Halifax, Nova Scotia. March.

Burkholder, C. (2022). Exploring research for social change and participatory visual research. Invited talk for the Canada-wide Science Fair at UNB, Fredericton, New Brunswick. May.

Burkholder, C. & Pride/Swell. (2022). Pride/Swell: An art, archiving & activism project with 2SLGBTQ+ Atlantic Canadian Youth. FLOURISH Festival. Fredericton, New Brunswick. June.

Burt, S. (2021). National Day of Remembrance and Action on Violence against Women Ceremony hosted by Diversity Within Engineering Society. December 6.

Cunningham, B., Emiko, E., Fullerton, J. & McLaughlin, M. (2022). Influencing Policy: Policy Briefs and Strategies for Transferring Research Knowledge to Policymakers [webinar]. March 1.

Holtmann, C., Sisic, M., Tastsoglou, E., Wilkinson, L. & Dawson, M. (2022) "Vulnerabilities and Inequalities: Parallel Challenges experienced by Migrant Survivors of Gender-Based Violence and Public Service Providers" paper presented at a CERC seminar. March.

Hon. Minister of Health Dorothy Shephard; Scott-Storey, Kelly; et al. (2021). Virtual. UNB shaping the debate: A sustainable future for health care in New Brunswick panel discussion. May 4 Included iHEAL as exemplars of research into practice. <http://blogs.unb.ca/newsroom/2021/05/shaping-the-debate.php>.

Lefurgey, M. (2022) "Exploring community-based rehabilitation for brain injury from intimate partner violence" with SOAR Canada and Pink Concussions, [panel facilitator].

Lefurgey, M. (2022) "Yoga in and as Peacebuilding in Post-Conflict Colombia." The Heart of Global Peace, UNHCR Fundraiser for Ukraine, AZAHAR Foundation, [webinar].

Nason-Clark, N. (2021) Religion and Intimate Partner Abuse: What Every Pastor Needs to Know. Online workshop for Pastors Serving in the Caribbean, Nov 5, 2021.

Nason-Clark, N. (2022) Religion and Intimate Partner Abuse: Is Religion Part of the Problem or Part of the Solution? Online workshop for DMin Students at Gordon Conwell Theological Seminary, Charlotte Campus, Charlotte, North Carolina, March 3.

Scott-Storey, K. (2021, March). Keynote address at the Muriel McQueen Fergusson Foundation AGM. iHEAL project. Virtual.

Taylor, P. (2022). Attention-seeking and Manipulative? Challenging the myths of women's help-seeking for suicidality. Canadian Federation of Mental Health Nurses, [Webinar], Canada.

Taylor, P. (2021). Writing Qualitative Research Methodology. Faculty of Nursing Master of Nursing Program Symposium, Fredericton, Canada.

Taylor, P. (2021). Trauma and Violence Informed: An Approach to Nursing Curricula. Curriculum Days: UNB Faculty of Nursing, 2021, Fredericton, Canada.

Taylor, P. (2021). Caring for women with suicidality and mental health crises. iHEAL: Education Workshop for RNs (implementation study with Public Health Agency of Canada), Fredericton, Canada.

Taylor, P. (2021). Substance Use, Suicidality, and Stigma. Annual EQUIP Pathways Meeting, Vancouver, Canada.

Taylor, P. (2021). Considerations of suicidality and connection with substance use. Meeting for the EQUIP Pathways Project with the Public Health Agency of Canada, Vancouver, Canada. Funding Sources: Public Health Agency of Canada.

Yakubovich, A. R. (2021). Bridging the evidence-practice gap in the housing response to intimate partner violence against women: a mixed-methods knowledge synthesis project. Joanna Briggs Institute, Centre of Excellence in Systematic Reviews, Dalhousie University, Halifax, Canada. December 16.

Yakubovich, A. R. & Shastri, P. (2021). Adapting Toronto's violence against women response to the COVID-19 pandemic: the MARCO VAW study. MAP Evaluation Series. MAP Centre for Urban Health Solutions, St Michael's Hospital, Unity Health Toronto, Canada. June 15.

Yakubovich, A. R. & Shastri, P. (2022). Adapting Toronto's violence against women response to the COVID-19 pandemic (part 4): results overview. Audience: Toronto Region violence against women sector. [webinar] January 13.

Yakubovich, A. R. & Shastri, P. (2021). Adapting the violence against women systems response to the COVID-19 pandemic: MARCO town hall event. Audience: social care and healthcare sectors. [webinar] December 12.

Yakubovich, A. R. & Shastri, P. (2021). MARCO VAW study: preliminary interview findings on residential services. Audience: Toronto Region Violence Against Women Network (VAWN). [webinar] October 27.

Yakubovich, A. R. & Shastri, P. (2021). Adapting Toronto's violence against women response to the COVID-19 pandemic (part 3): preliminary interview findings. . Audience: Toronto Region violence against women sector. [webinar] October 18.

Yakubovich, A. R. (2021). Bridging the evidence-practice gap in the housing response to IPV against women: introductory meeting with knowledge user partners.. Audience: Women Shelters Canada, Women's National Housing and Homelessness Network, YWCA, Ontario Association of Interval and Transition Houses, Woman Abuse Council of Toronto. [webinar] September 17.

Yakubovich, A. R. & Shastri, P. (2021). Adapting Toronto's violence against women response to the COVID-19 pandemic (part 1): preliminary survey results. Audience: Toronto Region violence against women sector. [webinar] July 6.

Yakubovich, A. R. & Shastri, P. (2021). Adapting Toronto's violence against women response to the COVID-19 pandemic (part 2): reflecting on our initial survey results and exploring our next steps. Audience: Toronto Region violence against women sector. [webinar] September 13.



## CONFERENCE & WORKSHOP PRESENTATIONS

---

Bhattacharyya, P., Tastsoglou, E., Wilkinson, L., Dawson, M. & Holtmann, C. (May 16-20, 2022.). "A Journey from 'Victimization' to 'Re-Victimization' Among Women Migrating to Canada – Continuity of Gender-Based Violence across Borders", presented at the Canadian Sociological Association's Annual Meeting.

Burkholder, C. & Barrett, J. (2022, May). Sex education queer youth need: Identifying gaps in New Brunswick sex education with 2SLGBTQ+ youth and teachers. Canadian Society for the Study of Education Annual Meeting. (Virtual conference—Covid-19).

Burkholder, C. & Hamill, K. (2021, November). Reflecting on the AnthroPoZINE: Exploring opportunities and challenges within pre-service geography education through collage. Art Education Research Institute Symposium. Teachers College, Columbia: New York, NY. (Virtual Conference—Covid-19).

Burkholder, C., Hill, M., LeBel, S. & Noreiga, A. (2022, May). Forging queer solidarities in university spaces in Trinidad & Tobago and New Brunswick, Canada through cellphilm and zine production. Canadian Society for the Study of Education Annual Meeting. (Virtual conference—Covid-19).

Burkholder, C., Malins, P. & Whitty, P. (2022, May). Bodies, boundaries, consent & gender expression: Exploring the supports and barriers to sexuality education. Canadian Society for the Study of Education Annual Meeting. (Virtual conference—Covid-19).

Burkholder, C., Noreiga, A., Hill, M. & LeBel, S. (2022, April). Forging queer solidarities: Exploring queer campus spaces through cellphilms and zine production. AERA, San Diego, CA.

Burkholder, C. & Simon, S. (2022, May). Forging Solidarities through Digital Spaces in the Wabanaki Confederacy: The potential for Instagram to Share Art & Activism. Canadian Society for the Study of Education Annual Meeting. (Virtual conference—Covid-19).

Burkholder, C., Soriano, J. & Ramos-Pakit, A. (2021, July). Revisiting “We Are Hong Kong Too”: Re-examining belonging and resistance with Filipina Hong Kongers. World Education Research Association Forum. Santiago de Compostela, Spain. (Virtual conference—Covid-19).

Burkholder, C., Soriano, J. & Ramos-Pakit, A. (2021, July). Revisiting Filipina-Hong Kongers’ Cellphilms (Cellphone + Film Production) and Activism surrounding the Umbrella Revolution. International Visual Sociology Association. Dublin, Ireland. (Virtual conference—Covid-19).

Burkholder, C. & Thompson, J. (2021, July). Drawing, writing, blogging, audio-recording and...?: Exploring Fieldnotes in Visual Sociology. International Visual Sociology Association. Dublin, Ireland. (Virtual conference—Covid-19).

Burkholder, C., Thorpe, A., Weaver, B., MacEntee, K. & Mandrona, A. (2022, April). Opportunities & challenges to mail-based participatory visual research with 2SLGBTQ+ Atlantic Canadian youth amidst the COVID-19 pandemic. AERA, San Diego, CA.

Burkholder, C., Thorpe, A., Weaver, B., MacEntee, K. & Mandrona, A. (2022, May). Exploring the Pride/Swell participatory archive: Zine production in response to an archive of DIY art produced with 2SLGBTQ+ Atlantic Canadian youth amidst COVID-19. Horizons: Crisis and Social Transformation in Community-Engaged Research Conference. Simon Fraser University, Vancouver, BC.

Campbell, M.A. (2022). Effects of Trauma on Sexual Assault Complainants: Implications for Conducting a Competent and Trauma-Informed Interview: Module 2. Delivered to Kennebecasis Regional Police Force. [workshop].

Campbell, M.A. (2021). Evidence-based interviewing strategies for information gathering from victims/complainants: Module 1. [workshop].

Campbell, M.A. (2022). Police & Fire Pre-Employment Selection Assessments. Delivered to Clinical Psychology Doctoral Students, University of New Brunswick, Fredericton, New Brunswick. [workshop].

Fannoush, H. Presentation (2022, April) on the Arab Cultural Centre and the Muslim Family Safety Project at the Provincial Partnerships in Action Workshop (online).

Figueiredo, V. & Cameron, C. A. (2021, June 22). Humour for flourishing agency: Across ages & around the globe [Symposium]. Annual meeting of the Canadian Psychological Association, Virtual conference.

Freeze, S., Reilly, O., Campbell, M.A., Cuellar, A., Totten, A. & Young, M. (2022, Feb). Sources of Variation in Police Officer Attitudes Towards Body-Worn Cameras. Paper presented at the Canadian Forensic Psychology Virtual Conference, St. Mary’s University, Halifax, NS.



Gerhardt, E., Aggarwal, D., Shao, S., Richard, M.E. & Cameron, C.A. (2020, October 28th – November 1st). Children's Consideration of Beneficence and Veracity in Determining Epistemic and Interpersonal Trust [Poster presentation]. 46th Association of Moral Education Annual Conference, Virtual conference. [https://whova.com/portal/assoc\\_202010/?source=download\\_page](https://whova.com/portal/assoc_202010/?source=download_page).

Gerhardt, E., Figueiredo, V. & Cameron, C. A. (2021, April 7). Exploring new research opportunities through the quasi-ecological model of "A Day in the Life" [Workshop]. Society for Research in Child Development Biennial Meeting, Virtual conference. <https://tinyurl.com/y6zwsacq>.

Gryshchuk, L. & Campbell, M.A. (2021, June). Influence of operational, personal, and organizational stressors on PTSD among first responders. Paper presented at the annual convention of the Canadian Psychological Association [virtual conference].

Holtmann, C. (2021). "A Culturally Integrated Approach to Muslim Family Safety," paper presented at the annual meeting for the Canadian Society for Studies in Religion, online. 30 May.

Holtmann, C. (2021). "Muslim Families on the Move: A Culturally Integrative Approach to Family Violence," paper presented at the annual meeting for the Society for the Scientific Study of Religion, online. 16 October.

Holtmann, C. (2021). "Religion and Immigrant Women's Experiences of Gender Based Violence: Implications for Public Policy," paper presented at the Canadian Sociological Association annual meeting during Congress 2021, online. 2 June.

Holtmann, C., Sisic, M., Tastsoglou, E., Wilkinson, L. & Dawson M. (2022). "Vulnerabilities and Inequalities: Parallel Challenges experienced by Migrant Survivors of Gender-Based Violence and Public Service Providers" paper presented at a CERC seminar in preparation for submission to Canadian Ethnic Studies.

Maitreyi, M. & Holtmann, C. (2021). "A Discussion of Premigration Trauma and Postmigration Stress as Possible Factors for IPV in Immigrant/Refugee Populations," paper presented at the Preventing Domestic Homicide Conference hosted by the Canadian Domestic Homicide Prevention Initiative, online. 12 May.

Nero, J. & Campbell, M.A. (2022, Feb). The accuracy and sensitivity of intimate partner violence professionals' risk appraisal in hypothetical risk scenarios. Paper presented at the Canadian Forensic Psychology Virtual Conference, St. Mary's University, Halifax, NS.

O'Donnell, S., Scott-Storey, K., Taylor, P., Vincent, C., Wuest, J. & Malcolm, J. (2021). Masculinity and violence interconnectedness: Defining and reconciling the gender paradox among men with cumulative lifetime violence histories. UNB Health Research Conference (HRC), Fredericton, Canada HRC\_schedule.pdf (unb.ca).

Richard, M. E. & Cameron, C. A. (2021, June 25th). Social expectations of masculinity challenge adolescent boys' navigations of dating. In Supporting healthy adolescent communication within digital era relationships [Symposium]. Annual meeting of the Canadian Psychological Association, Virtual conference.

Simon, S. & Burkholder, C. (2022, April). Resilience and Solidarity Building on Instagram: Exploring Art and Activism with Indigenous Peoples and 2SLGBTQ+ Youth in the Wabanaki Confederacy. AERA, San Diego, CA.

Sisic, M., Tastsoglou, E., Wilkinson, L., Dawson, M., Holtmann, C. & Falconer C. "The Continuum of Violence along the Migratory Pathway: Perspectives from Key Informants", Canadian Sociological Association, Congress of Social Sciences and Humanities <https://www.csa-scs.ca/conference/session/gender-based-violence-along-the-migratory-pathway/> (Edmonton, June 2021 - virtual).

Stewart, H. & Campbell, M.A. (2022, Feb). Developing a Typology of Community Men with Sexual Interest in Children. Paper presented at the Canadian Forensic Psychology Virtual Conference, St. Mary's University, Halifax, NS.

Stilwell, C., Weeks, L., Rothfus, M., Weeks, A., MacDonald, M., Jackson, L., Dupuis-Blanchard, S., Carson, A., Moody, E., Helpard, H. & Daclan, A. (2021). Intimate partner violence interventions for women across the lifespan in the context of the COVID-19 pandemic: A systematic review. Oral presentation at the Canadian Association on Gerontology Annual Scientific and Educational Meeting (virtual).

Switzer, S., Vela Alarcon, A. & Burkholder, C. (2022, May). *Beyond the toolkit: Online and Remote Community-Engaged Facilitation in the COVID-19 Pandemic*. Horizons: Crisis and Social Transformation in Community-Engaged Research Conference. Simon Fraser University, Vancouver, BC.

Taylor, P., O'Donnell, S., Scott-Story, K., Vincent, C., Wuest, J. & Malcolm, J. Men's Violence, Gender and Health Study, NB Canada: A qualitative analysis about their mental health related to cumulative lifetime violence. Annual Nursing Research Day, UNB Nursing Research Day | Faculty of Nursing | UNB.

Taylor, P., Russell, J. & Pleshka, E. (2021). Grounded theory analysis for a women and suicidality study: Team work with nursing student research assistants. Faculty of Nursing, UNB Research Day, Fredericton, Canada Nursing Research Day | Faculty of Nursing | UNB.

Yakubovich, A. R., Heron, J., Metheny, N., Gesink, D. & O'Campo, P. (2021, June). Measuring the burden of intimate partner violence by sex and sexual identity. Society for Prevention Research Annual Meeting. (Virtual conference due to COVID-19).

Yakubovich, A. R., Heron, J., Metheny, N., Gesink, D. & O'Campo, P. (2021, June). Measuring the burden of intimate partner violence by sex and sexual identity: results from a random sample in Toronto, Canada. Society for Epidemiologic Research Annual Meeting. (Virtual conference due to COVID-19).



## ARTICLES & CHAPTERS

---

Burkholder, C. (2021). Cellphilming and building solidarity with queer youth to speak back to historical erasures in New Brunswick Social Studies classrooms. *The Councilor: A Journal of the Social Studies*. 0(1), 113-132. [https://thekeep.eiu.edu/the\\_councilor/vol0/iss1/10](https://thekeep.eiu.edu/the_councilor/vol0/iss1/10).

Burkholder, C. (2021). Think/Film/Screen/Change: Negotiating ethics with rural New Brunswick girls and trans and non-binary youth. In. R. Moletsane, A. Mandrona & L. Wiesbesiek (Eds.), *Ethical practice in participatory visual research with girls: Transnational approaches*, (pp. 43-63). Bergahn.

Burkholder, C., Aladejebi, F. & Schwab-Cartas, J. (2022). Embracing new paths in visual research facilitation: Opportunities, tensions & ethical considerations, *Visual Studies*, 37(1-2), 7-10, DOI: 10.1080/1472586X.2021.1962735.

Burkholder, C., Aladejebi, F. & Schwab-Cartas, J. (2022). What about facilitation? Thinking about ethical considerations in qualitative, community-based, and visual research for social change. *Leading and listening to community: Facilitating qualitative, arts-based, and visual research for social change*. (pp. 1-14). Routledge.

Burkholder, C., Aladejebi, F. & Schwab-Cartas, J. (2022). What have we learned about facilitation? Concluding thoughts. *Leading and listening to community: Facilitating qualitative, arts-based, and visual research for social change*. (pp. 277-287). Routledge.

Burkholder, C., Aladejebi, F. & Thompson, J. (2022). Engaging DIY media making to explore existing dystopic conditions with queer youth in New Brunswick, Canada. In C. Lee, C. Burnett & J. Rowsell (Eds.) *Literacy in Uncertain Times*. (pp. 165-180). Springer. [https://link.springer.com/chapter/10.1007/978-981-16-6944-6\\_11](https://link.springer.com/chapter/10.1007/978-981-16-6944-6_11).

Burkholder, C. & Chase, A. (2021). Exploring the creative geographies of work with pre-service social studies teachers: Exposing intersections of time and labour in New Brunswick, Canada. *McGill Journal of Education*, 55(3), 1-20. <https://mje.mcgill.ca/issue/view/573>.

Burkholder, C., Cruickshank, L. & Lebel, S. (2021). Feminist write club as activist practice: Creating space for collaboration, solidarity, and strategizing within the institution. *Sister scholars: Untangling issues of identity as women in the academy*. (pp. 31-40). DIO Press.

Burkholder, C., Hamill, K. & Thorpe, A. (2021). Zine production with queer youth and pre-service teachers in New Brunswick, Canada: Exploring connection, divergences and visual practices. *Canadian Journal of Education*. 44(1), 89-115. <https://journals.sfu.ca/cje/index.php/cje-rce/article/view/4535>.

Burkholder, C., MacEntee, K., Mandrona, A. & Thorpe, A. (2021). Co-producing digital archives with 2SLGBTQ+ Atlantic Canadian youth amidst COVID-19. *Qualitative Research Journal*. Vol. ahead-of-print No. ahead-of-print. <https://doi.org/10.1108/QRJ-01-2021-0003>.

Burkholder, C., Ramos-Pakit, A. & Soriano, J. (2021). Examining gender and resistance with Filipina young women in post-Umbrella Revolution Hong Kong through cellphilm method and collaborative writing. *Studies in Social Justice*, 15(1), 25-42. <https://journals.library.brocku.ca/index.php/SSJ/issue/view/127>.

Burkholder, C. & Thorpe, A. (2022). Facilitating gender-affirming participatory visual research in embodied and online spaces. *Visual Studies*, 37(1-2), 37-46. DOI: 10.1080/1472586X.2021.1982650.

Cameron, C.A. (2022). Chapter 1: Development of the Day in the Life methodology for studying participants across the lifespan and around the globe. In C.A. Cameron & C. Stella (Eds). *Thriving across the lifespan and around the globe: The Day in the Life visual research approach* (pp. 1-5). Bentham Books.

Cameron, C.A. (2022). Prologue: A Day in the Life. In C.A. Cameron & C. Stella (Eds). *Thriving across the lifespan and around the globe: The Day in the Life visual research approach* (pp. iii-iv). Bentham Books.

Cameron, C.A. & Figueiredo, V. (2022). Chapter 15: History of the Day in the Life Methodology. In C.A. Cameron & C. Stella (Eds), *Thriving across the lifespan and around the globe: The Day in the Life visual research approach* (pp. 126-129). Bentham Books.

Curley, T., Campbell, M.A., Doyle, J. N. & Freeze, S. (2021, online first). First responders' perceptions of the presence of support canines in the workplace. *Journal of Police and Criminal Psychology*, <https://doi.org/10.1007/s11896-021-09477-4>.

Didkowsky, N., Cameron, E.L. & Cameron, C.A. (2022). Chapter 13: "When you laugh, the world is again beautiful": Use of humour by thriving older adults. In C.A. Cameron & C. Stella (Eds), *Thriving across the lifespan and around the globe: The Day in the Life visual research approach* (pp. 107-117). Bentham Books.

Doyle, J., Campbell, M.A. & Gryschuk, L. (2021). Occupational stress and anger: Mediating effects of resiliency in first responders. *Journal of Policing and Criminal Psychology*, 36, 463-472. <https://doi.org/10.1007/s11896-021-09429-y>.

Gill, C., Ballucci, D. & Campbell, M.A. (2021). Police officers' definitions and understandings of intimate partner violence in New Brunswick, Canada. *The Police Journal: Theory, Practice and Principles*, 94(1), 20-39. <https://doi.org/10.1177/0032258X19876974>.

Gillen, J. & Cameron, C.A. (2022). Chapter 3: Importance of video-centred ethnography in a Day in the Life project: A case of beavers and citizenship. In C.A. Cameron & C. Stella (Eds), *Thriving across the lifespan and around the globe: The Day in the Life visual research approach* (pp. 18-24). Bentham Books.

Holtmann, C. (2023). Violence in Families, Chapter 14. In Patrizia Albanese, ed. *Canadian Families Today: New Perspectives*, 5th Edition. Pp. 307-326. Oxford University Press.

Holtmann, C. (2022). Mixed-methods and comparative approaches to studying Muslim immigrant women in Canada. In Amélie Barras, Jennifer Selby and Melanie Adrian, Eds., *Producing Islam(s) in Canada: On Knowledge Production, Positionality and Politics*. (pp. 299-323). Toronto, ON: University of Toronto Press.

Huey, L., Andersen, J., Bennell, C., Campbell, M.A., Koziarski, J. & Vaughan, A.D. (2021). Caught in the Currents: Evaluating the evidence for common downstream police response interventions in calls involving persons with mental illness. *FACETS*, 6(1), 1409-1445. <https://doi.org/10.1139/facets-2021-0055>.

Hunt, A.K., Cameron, C.A. & Jenkins, S. (2022). Chapter 7: Home work: Bridging the worlds of home and school. In C.A. Cameron & C. Stella (Eds), *Thriving across the lifespan and around the globe: The Day in the Life visual research approach* (pp. 54-59). Bentham Books.

Kotelnikova, K., Lefebvre, C., Campbell, M.A., Canales, D. & Stewart, C. (2021, online first). Intersection of personality profiles and criminogenic risk-needs in justice-involved youth. *Youth Violence and Juvenile Justice*. <https://doi.org/10.1080/14999013.2021.1972061>.

Little, M. T\*, Roelen, K., Lange, B. C. L., Steinert, J. I., Yakubovich, A. R., Cluver, L. D. & Humphreys, D. K. (2021). Do cash-plus programmes improve early childhood outcomes more than cash transfers or child development interventions alone? A systematic review and meta-analysis in low- and middle-income countries. *PLOS Medicine*, 18(9), e1003698.

McKay, S.L., Fouladirad, S. & Cameron, C.A. (2021). The Frustration Social Stressor for Adolescents (FSS-A): A newly adapted psychosocial stressor. *Stress & Health*, 37, 715-728. <https://doi.org/10.1002/smi.3029>.



McKay, S.L., Santos-Iglesias, P., Byers, E.S. & Cameron, C.A. (2021). Development and initial validation of the Dating Violence Evaluation Questionnaire (DVEQ). *Canadian Journal of Behavioural Science*. <https://doi.org/10.1037/cbs0000254>.

Nero, J., Campbell, M.A. & Doyle, J. N. (2022, accepted). Social support quality predicts lower PTSD symptom severity in Canadian police officers. *Journal of Police and Criminal psychology*.

Pinto, G., Cameron, C.A. & Toselli, M. (2020). An old mechanism, imitation, intended for socio-material knowing in "A Day in the Life" of first graders. *Frontiers in Psychology*, 11(177), 1-7. <https://doi.org/10.3389/fpsyg.2020.00177>.

Robitaille, A., Bourassa, C., Roy, V., Elisabeht, G. & Lessard, G. (2022). Analyse de l'implantation du programme Caring Dads en contexte québécois et des changements observés chez les participants, 51(2).

Rogers, M. & Burkholder, C. (2022). "I feel like there should have been an opportunity for consultation": Navigating pandemic education reforms with New Brunswick teachers. *Our Schools/ Our Selves: Education in crisis*. 9-13. <https://www.policyalternatives.ca/publications/ourschools-ourselves>.

Reilly, N., Bjørnholt, M. & Tastsoglou, E. "Vulnerability, Precarity and Intersectionality: A Critical Review of Three Key Concepts for Understanding Gender-Based Violence in Migration Contexts", in *Gender-Based Violence in Migration: Interdisciplinary, Feminist and Intersectional Approaches*, edited by J. Freedman, N. Sahraoui and E. Tastsoglou (alphabetical order). Palgrave-Macmillan, 2022 (forthcoming).

Scott-Storey, K., O'Donnell, S., Busolo, D., DiTommaso, E., Malcolm, J., Taylor, P., Vincent, C. D. & Wuest, J. (2022). Cumulative lifetime violence severity, social determinants and anxiety in a national sample of Canadian men. *BMC Psychiatry*, 22(1). <https://doi.org/10.1186/s12888-022-03865-8>.

Sisic, M., Tastsoglou, E., Wilkinson, L., Dawson, M., Holtmann, C. & Falconer, C. (2022). "The Continuum of Violence along the Migratory Pathway: Understandings of Key Informants", in submission to the *Canadian Journal of Sociology*.

Starzyk, K. B., Siemens Neufeld, K. H., Gaucher, D., Vorauer, J. D., Fontaine, A. S. M., Quesnel, M. & Yakubovich, A. R. (2021). "Is water a human right?" Priming water as a human right increases support for government action. *International Indigenous Policy Journal*, 12(3), 1-28.

Steinert, J. I., Alacevich, C., Steele, B.\*, Hennegan, J. & Yakubovich, A. R. (2021). Response strategies for promoting gender equity in public health emergencies: a rapid evidence assessment. *BMJ Open*.

Stilwell, C., Weeks, L. E., Rothfus, M., Weeks, A., Macdonald, M., Jackson, L., Dupuis-Blanchard, S., Carson, A., Moody, E., Helpard, H. & Daclan, A. (2021). infographic: intimate partner violence interventions relevant to women during the COVID-19 pandemic. *Healthy Populations Journal*, 1(2), 94-97. <https://doi.org/10.15273/hpj.v1i2.11048>. <https://ojs.library.dal.ca/hpj/article/view/11048/10013>.

Storey, K., O'Donnell, S., Perrin, N. & Wuest, J. (2022). Cumulative lifetime violence, gender, social determinants of health, and mental health in Canadian men: A latent class analysis. [Manuscript under review].

Tastsoglou, E., Falconer, C., Sisic, M., Dawson, M. & Wilkinson, L. (2022). "The Gender of Canadian Legal and Policy Gender-Based Violence and Immigration Frameworks", in *Gender-Based Violence in Migration: Interdisciplinary, Feminist and Intersectional*.

Tastsoglou, E., Sahraoui, N. & Freedman, J. (2022). "Conclusion" in *Gender-Based Violence in Migration: Interdisciplinary, Feminist and Intersectional Approaches*, edited by J. Freedman, N. Sahraoui and E. Tastsoglou (alphabetical order). Palgrave-Macmillan, 2022 (forthcoming).

Tastsoglou, E., Wilkinson, L. & Dawson, M. (2022). "Gender, Intersectionality and Citizenship: Migrant and Refugee Women in Canada Surviving Gender-Based Violence", book chapter invited by Mary Romero and Reshawna Chapple, editors of *Research Handbook on Intersectionality* to be published by Edward Elgar Books (forthcoming, 2023).

Taylor, P. (2022). Challenging the Myth of "Attention Seeking" Women with Suicidality: A Grounded Theory Study about Applying Counter-Pressure to Manage System Entrapment. *Issues in Mental Health Nursing*, 1-12. <https://doi.org/10.1080/01612840.2021.2014608>.

Taylor, P. L., O'Donnell, S., Wuest, J., Scott-Storey, K., Vincent, C. & Malcom, J. (2021). The Mental Health Effects of Cumulative Lifetime Violence in Men: Disruptions in the Capacity to Connect with Others and Finding Ways to Reengage. *Global Qualitative Nursing Research*, 8, 23333936211021576. <https://doi.org/10.1177/23333936211021576>.

Taylor, P. L., O'Donnell, S., Wuest, J., Scott-Storey, K., Vincent, C. & Malcolm, J. (2021). The mental health effects of cumulative lifetime violence in men: Disruptions in the capacity to connect with others and finding ways to reengage. *Global Qualitative Nursing Research*, 8, 1-16.

Toselli, M., Pinto, G. & Cameron, C.A. (2022). Chapter 10: Learning through imitation in daily-life at home and school. In C.A. Cameron & C. Stella (Eds), *Thriving across the lifespan and around the globe: The Day in the Life visual research approach* (pp. 78-91). Bentham Books.

Waldron, I., MacDougall, E. S. & Weeks, L. E. (2021). Hear my cry: Breaking the code of silence around intimate partner violence among Black women in and beyond midlife. *Atlantis: Critical Studies in Gender, Culture, and Social Justice*, 42(1), 18-30. <https://journals.msvu.ca/index.php/atlantis/article/view/5548>.

Weaver, B., Thorpe, A., Mandrona, A., MacEntee, K., Burkholder, C. & Pride/Swell. (2022). Theorizing non-participation in a mail-based participatory visual research project with 2SLGBTQ+ youth in Atlantic Canada. *Leading and listening to community: Facilitating qualitative, arts-based, and visual research for social change*. (pp. 127-142). Routledge.

Weeks, L. E., Stilwell, C., Gagnon, D., Dupuis-Blanchard, S., MacQuarrie, C. & Jackson, L. (2021). Initiatives to support older women who experience intimate partner violence. *Violence Against Women*. 27(15-16), 3011-3029, [doi.org/10.1177/1077801220988355](https://doi.org/10.1177/1077801220988355). <https://journals.sagepub.com/doi/full/10.1177/1077801220988355>.

Yaghoubirad, M., Azadfallah, P., Farahani, H. & Cameron, C.A. (2021). Talking with Iranian trans women: Their experiences and identity development. *Journal of Gay & Lesbian Mental Health*, 1-21. <https://doi.org/10.1080/19359705.2021.1923607>.

Yakubovich, A. R. & Maki, K. (2021). Preventing gender-based homelessness in Canada during the COVID-19 pandemic and beyond: the need to account for violence against women. *Violence Against Women*.

Yakubovich, A. R., Bartsch, A., Metheny, N., Gesink, D. & O'Campo, P. (2021). Housing interventions for women experience intimate partner violence: a systematic review of the quantitative evidence on effectiveness. *The Lancet Public Health*.

Yakubovich, A. R., Degli Esposti, M., Lange, B. C. L., Melendez-Torres, G. J., Parmar, A., Wiebe, D. J. & Humphreys, D. K. (2021). What are the effects of expanding the right to use lethal force in self-defense on violent injury and crime in the USA? A systematic review. *American Journal of Public Health*, 111, e1-e14.

Yakubovich, A. R., Heron, J., Barter, C. & Humphreys, D. K. (2022). Trajectories of exposure to neighbourhood deprivation and the odds of experiencing intimate partner violence among women: are there sensitive periods for exposure? *Journal of Interpersonal Violence*, 37(7-8), NP5728-NP5746.

Yakubovich, A. R., Heron, J., Metheny, N., Gesink, D. & O'Campo, P. (2021). Measuring the burden of intimate partner violence by sex and sexual identity: results from a random sample in Toronto, Canada. *Journal of Interpersonal Violence*.

## BOOKS

---

Burkholder, C., Aladejebi, F. & Schwab-Cartas, J. (2022). *Facilitating community research for social change: Case studies in qualitative, arts-based and visual research*. Routledge.

Burkholder, C., Aladejebi, F. & Schwab-Cartas, J. (Eds.). (2022). Embracing new paths in visual research facilitation. *Visual Studies*. 37(1-2). <https://www.tandfonline.com/toc/rvst20/37/1-2?nav=tocList>.

Cameron, C. A. & Stella, C. (2022). *Thriving across the lifespan and around the globe: The Day in the Life visual research approach*. Bentham Books.

Freedman, J., Sahraoui, N. & Tastsoglou, E. (2022). "Thinking about Gender in Migration: An Introduction", in *Gender-Based Violence in Migration: Interdisciplinary, Feminist and Intersectional Approaches*, edited by J. Freedman J., Sahraoui N., Tastsoglou E., Palgrave-Macmillan, 2022 (forthcoming).

Freedman, J., Sahraoui, N. & Tastsoglou, E., editors (alphabetical order), (2022). *Gender-Based Violence in Migration: Interdisciplinary, Feminist and Intersectional Approaches*. Palgrave-Macmillan (forthcoming 2022).







# MEDIA ENGAGEMENTS

---

Burkholder, C. & LeBel, S. Interviewed by Hiscox, H. (2022, January 25). Omicron Exhaustion Art Project: Casey Burkholder & Sabine LeBel. CBC Morning Live. [https://main.mp4.cbc.ca/prodVideo/news/CBC\\_News\\_VMS/129/210/nn-covid-art-lebel-burkholder-250122\\_7000kbps.mp4](https://main.mp4.cbc.ca/prodVideo/news/CBC_News_VMS/129/210/nn-covid-art-lebel-burkholder-250122_7000kbps.mp4).

Burkholder, C. & LeBel, S. Interviewed by Ibrahim, H. (2022, January 22). Bring me your tired, trash, low effort art: UNB professors urge exhausted to be creative. CBC. [https://www.cbc.ca/news/canada/new-brunswick/fredericton-feminist-collective-omicron-exhaustion-art-1.6321576?fbclid=IwAR1pAu-Zg4vs2IS9vwNQ\\_E1fjhZHZfDpkgtlrbnXc3vxuzOI3qG3W4b7SXnk](https://www.cbc.ca/news/canada/new-brunswick/fredericton-feminist-collective-omicron-exhaustion-art-1.6321576?fbclid=IwAR1pAu-Zg4vs2IS9vwNQ_E1fjhZHZfDpkgtlrbnXc3vxuzOI3qG3W4b7SXnk).

Burkholder, C. & LeBel, S. (2022, January 20). Omicron exhaustion art project. CBC Information Morning: Fredericton. <https://www.cbc.ca/listen/live-radio/1-25-information-morning-fredericton/clip/15890230-omicron-exhaustion-art-project?share=true>.

Carleton, L. (2022, January 16). Fredericton Feminist Film Collective introduces virtual showcase, "Yearning." The Aquinian. <https://theaquinian.net/39721-2/>.

Crocker, D. & Winters, L. Interviewed by Barbara Sweet (2021, Feb 28). IWD: #MeToo brought the conversation about sexual violence into the light, but action still needed. Saltwire Network. <https://www.thetelegram.com/news/local/international-womens-day-metoo-brought-the-conversation-about-sexual-violence-into-the-light-but-action-still-needed-557901/>.

Neigh, S. (2022, March 22). How grassroots community-based initiatives changed due to COVID-19 [with Sarah Switzer, Andrea Vela Alarcón, Rubén Gaztambide-Fernandez & Casey Burkholder]. Talking Radical Radio. <https://soundcloud.com/scott-neigh-talking-radical/how-grassroots-community-based-initiatives-changed-due-to-covid-19>.

Yakubovich, A. R. Interviewed by Jeff Douglas (2021, November 25). CBC Mainstreet NS. Radio. Topic: Housing interventions for women experiencing violence.

Yakubovich, A. R. Interviewed by Jeff Douglas (2022, April 8). CBC Mainstreet NS. Radio. Topic: Intimate partner violence in Nova Scotia.

Yakubovich, A. R. Interviewed by Melanie Starr (2021, November 25). Dal News. Print. Topic: Housing interventions for women experiencing violence. [https://www.dal.ca/news/2021/11/25/more-research-and-resources-needed-to-better-support-women-left.html?utm\\_source=dalnewsRSS&utm\\_medium=RSS&utm\\_campaign=dalnews](https://www.dal.ca/news/2021/11/25/more-research-and-resources-needed-to-better-support-women-left.html?utm_source=dalnewsRSS&utm_medium=RSS&utm_campaign=dalnews).

Yakubovich, A. R. Interviewed by Yvette D'Entremont (2022, April 21). The Halifax Examiner Print. Topic: CIHR-funded study on violence against women services. <https://www.halifaxexaminer.ca/province-house/dalhousie-researcher-studying-how-pandemic-impacted-violence-against-women-services/>.



# MMFC-HOSTED WEBINARS

---

Allen, I. (2021, Sept). Employee Mental Wellness. Respectful Workplace Week Annual Conference. "Workplace Wellness: Psychological Health and Safety". [virtual conference].

Battah, P. (2021, Sept). Humanity at Work. Respectful Workplace Week Annual Conference. "Workplace Wellness: Psychological Health and Safety". [virtual conference].

Boudreau-Dumas, M., Landry, C. & Manuel, L. (2022). The nexus of poverty and domestic violence in family law [webinar]. March 16.

Davis, J. (2021). Mediation and Family Violence in Family Law [webinar]. October 20.

Gagnon, D. (2021). Family Violence Issues Certificate Program promotional webinar. MMFC Family (Violence) Prevention Month Webinar Series. [webinar] November 30.

Gill, C. (2021). Comprendre le contrôle coercitif dans le contexte du système de justice pénale [webinar] June 8.

Gill, C. (2021). Understanding Coercive Control in the context of the Criminal Justice System [webinar]. June 17.

Klencakova, L. (2022). IPV in the relationships of young people and the education sectors response in Northern Ireland [webinar]. April 7.

Lefurgey, M. (2021). "Embodied and Relational Approaches to Addressing Violence. MMFC Family (Violence) Prevention Month Webinar Series. [webinar] November.

Locke, A. (2021). Educating and informing New Brunswickers about intimate partner violence. MMFC Family Violence Prevention Month Webinar Series [webinar]. November 10.

Morrison, B. (2021, Sept). Positive Workplace Framework. Respectful Workplace Week Annual Conference. "Workplace Wellness: Psychological Health and Safety". [virtual conference].

Parker, S. (2021, Sept). Mental Health Pop-Up Café. Respectful Workplace Week Annual Conference. "Workplace Wellness: Psychological Health and Safety". [virtual conference].

Perry, T. (2021, Sept). PLEIS NB presents Safer Places. Respectful Workplace Week Annual Conference. "Workplace Wellness: Psychological Health and Safety". [virtual conference].

Winters, L. (2021). Intimate Partner Violence and the Workplace. MMFC Family Violence Prevention Month Webinar Series. [webinar] November 18.

# SEXUAL VIOLENCE CONFERENCE

MMFC was pleased to partner with the Université de Moncton, Mount Allison University, Sexual Violence NB, and the Women's Equality Branch to offer a 3-day virtual conference. The conference was delivered free of charge with simultaneous interpretation available and held the first week of November, 2021.



## COLLOQUE DE RECHERCHE SUR LA VIOLENCE SEXUELLE 2021 SEXUAL VIOLENCE RESEARCH CONFERENCE

SÉRIE VIRTUELLE BILINGUE – BILINGUAL VIRTUAL SERIES

### LUNDI 1 NOVEMBRE / MONDAY NOVEMBER 1

**Karla O'Regan, Ph. D & Sorcha Beirne** (St. Thomas University) 13 h / 1:00pm  
Tous ensemble : Créer un espace plus sûr dans et avec un festival de musique local  
*All Together Now: Creating Safer Space With/In a Local Music Festival*

**Diane Crocker, Ph. D** (Saint Mary's University) 14 h / 2:00pm  
Récits sur la culture du viol sur les campus  
*Telling Stories about Rape Culture on Campus*

### MARDI 2 NOVEMBRE / TUESDAY NOVEMBER 2

**Grace Coles** (University of New Brunswick) 13 h / 1:00pm  
Un effet d'entraînement : Ce que l'on peut apprendre lorsque les victimes racontent leur histoire  
*A Ripple Effect: What Can Be Learned When Victims Tell Their Story*

**Issane Fethi** (Université de Montréal) 14 h / 2:00pm  
Violences sexuelles chez les étudiantes et les étudiants internationaux : une population vulnérable ?  
*International Students and Sexual Violence: A Vulnerable Population?*

**Sylvie Morin, Ph. D., Marie-Andrée Pelland, Ph. D & Lise Savoie, Ph. D** (Université de Moncton) 15 h / 3:00pm  
Quand on veut parfois dire non : l'ambiguïté du consentement et la prévention de la violence sexuelle chez les étudiantes et les étudiants universitaires  
*When Yes Sometimes Means No: The Ambiguity of Consent and Sexual Violence Prevention Among University Students*

### VENDREDI 5 NOVEMBRE / FRIDAY NOVEMBER 5

**Lisa Dawn Hamilton, Ph. D** (Mount Allison University) 9 h 15 / 9:15am  
L'éducation sexuelle positive comme méthode de prévention de la violence sexuelle  
*Sex-Positive Sex Education as a Prevention Method for Sexual Violence*

**Catherine Holtmann, Ph. D** (University of New Brunswick) 10 h / 10:00am  
Conversations critiques et courageuses : Réflexions sur l'examen de la politique sur l'agression sexuelle de l'UNB  
*Critical and Courageous Conversations: Reflections on UNB's Sexual Assault Policy Review*

**Anne Comfort, Ph. D** (Mount Allison University) 11 h / 11:00am  
Aucun effort épargné : S'ouvrir à un examen par une tierce partie  
*No Stone Left Unturned - Opening Up to a 3rd Party Review*

**Madeline Lamboley, Ph. D** (Université de Moncton) 11 h 45 / 11:45am  
Penser la (ré)insertion sociale des travailleuses du sexe : Prendre en compte les besoins des femmes  
*Thinking About the Social (Re)Integration of Sex Workers: Taking Into Account the Needs Of Women*

**Sylvie Morin, Ph. D., Marie-Andrée Pelland, Ph. D & Lise Savoie, Ph. D** (Université de Moncton) 12 h 30 / 12:30pm  
L'influence du genre dans l'expression du consentement sexuel  
*The Influence of Gender in the Expression of Sexual Consent*

Interprétation  
simultanée  
disponible!

Simultaneous  
interpretation  
available!



#### EN PARTENARIAT :

#### IN PARTNERSHIP :



Mount Allison  
UNIVERSITY



Muriel McQueen  
Fergusson Centre  
for Family Violence Research

Centre Muriel  
McQueen Fergusson  
pour la recherche sur la violence familiale



#### Inscrivez-vous dès maintenant ! / Register now!

Nov 1 - [https://unbvirtualclasses.zoom.us/webinar/register/WN\\_b3dQq3x-QV-XFV9IHcVaFQ](https://unbvirtualclasses.zoom.us/webinar/register/WN_b3dQq3x-QV-XFV9IHcVaFQ)

Nov 2 - [https://unbvirtualclasses.zoom.us/webinar/register/WN\\_cNtokzDBTk6i9OKtgsBKAg](https://unbvirtualclasses.zoom.us/webinar/register/WN_cNtokzDBTk6i9OKtgsBKAg)

Nov 5 - [https://unbvirtualclasses.zoom.us/webinar/register/WN\\_Us7-4JUzRdyYUH\\_emO5jsw](https://unbvirtualclasses.zoom.us/webinar/register/WN_Us7-4JUzRdyYUH_emO5jsw)

# OTHER ACTIVITIES

---

Burkholder, C. (2021). Ethical commitments for community-engaged practitioners. Beyond the Toolkit. [video]. <https://www.youtube.com/watch?v=3RhqwR0RZ0s>.

Burkholder, C. (2021). Ethical considerations for community-engaged practitioners. Beyond the Toolkit. [video]. <https://www.youtube.com/watch?v=25NxhtMbFdY>.

Burkholder, C. (2021). Exploring online and remote pedagogies amongst practitioners. Beyond the Toolkit. [video]. <https://www.youtube.com/watch?v=rqBSv0YTN04>.

Burkholder, C. (2021). Findings: Recommendations & supports. Beyond the Toolkit. [video]. <https://www.youtube.com/watch?v=66i2EjNt7iU>.

Burkholder, C. (2021). Pedagogical considerations for community-engaged practitioners. Beyond the Toolkit. [video]. <https://www.youtube.com/watch?v=87sFaZjjfvA>.

Campbell, M.A. & Pelland, M-A. (2021, April). Changing Directions: 2020-2021 annual evaluation report. [research report] Submitted to the New Brunswick Department of Public Safety and Public Safety Canada, Fredericton, NB, Canada.

Campbell, M.A., Pelland, M-A. & Clairmont, D. (2021, May). Intercultural Youth Initiative 2020-2021 annual report. [research report] Submitted to John Howard Society of New Brunswick, Inc. and Public Safety Canada.

Campbell, M.A. & Pelland, M-A. (2022, June). Changing Directions: 2021-2022 annual evaluation report. [research report] Submitted to the New Brunswick Department of Public Safety and Public Safety Canada, Fredericton, NB, Canada.

Crocker, D., Jordan, M. & Jacobs, L. (2021). Evaluation Portfolio for Standing Together. [research report] (51pp.).

Crocker, D. & Jordan, M. (2021). Evaluation Report Domestic Violence Offender Navigator Pilot Project. Submitted to Halifax Regional Police. [research report] (48 pp.).

Crocker, D. & Jordan, M. (2021). Waves of Change Evaluation Report on the Bystander Intervention Training Program for Nova Scotia Universities. [research report] (70 pp.).

Holtmann, C. (2022). Collectivist Perspectives on the Common Good. January. [Blog post] [www.the-aveproject.org/category/blog/](http://www.the-aveproject.org/category/blog/).

Holtmann, C. (2022). Muslim Family Safety Project Community Mapping Results. [research report] <https://www.unb.ca/mmfc/research/featured-projects.html>.

Holtmann, C. (2022). Navigating Family, Faith and Violence. March. [Blog post] [www.theraveproject.org/category/blog/](http://www.theraveproject.org/category/blog/).

Holtmann, C. (2022). Shame. February. [Blog post] [www.theraveproject.org/category/blog/](http://www.theraveproject.org/category/blog/).

Huey, L., Andersen, J., Bennell, C., Campbell, M.A., Koziarski, J. & Vaughan, A.D. (2021). Caught in the Currents: Evaluating the Evidence for Common Downstream Police Response Interventions in Calls Involving Persons with Mental Illness. [policy brief] Royal Society of Canada. [https://rsc-src.ca/sites/default/files/MH%26P%20PB\\_EN\\_5.pdf](https://rsc-src.ca/sites/default/files/MH%26P%20PB_EN_5.pdf).

Lefurgey, M. (2022). A Path to Peace: Yoga in Colombia. April. [Blog post] [www.theraveproject.org/category/blog/](http://www.theraveproject.org/category/blog/).

O'Regan, K., Fusco-Virtue, A., Henry, LA. & Matheson, E. (2021). Trauma-Informed Approaches to Family Violence in Family Law. Family Violence & Family Law Brief, 7, (September 2021). Muriel McQueen Fergusson Centre for Family Violence Research. [Brief] ISBN: 978-1-7778342-0-3. [https://www.fvfl-vfdf.ca/briefs/Family\\_Violence\\_Family\\_Law\\_Brief-7-EN.pdf](https://www.fvfl-vfdf.ca/briefs/Family_Violence_Family_Law_Brief-7-EN.pdf).

O'Regan, K., Brennan, K., Matheson, E. & Fusco-Virtue, A. (2022). Family Law Mediation in Family Violence Cases: Basics & Best Practices. Family Violence & Family Law Brief, 13, (March 2022). Muriel McQueen Fergusson Centre for Family Violence Research. [Brief] ISBN: 978-1-7778342-1-0. <https://www.fvfl-vfdf.ca/briefs/Atlantic-FVFL-Brief-Issue-13---MARCH-2022-EN.pdf>.

Scott, K., Crocker, D., Jordan, M. & McFayden, N. (2021). Nova Scotia Men's Helpline Evaluation Report [research report] (24 pp.).

Weeks, L. (2021, May). Initiatives to support older women who experience intimate partner violence. [You Tube Video] [www.youtube.com/watch?v=FhMFglUTbNY](https://www.youtube.com/watch?v=FhMFglUTbNY).

Yakubovich, A. R., Tallon, E., Luther, I., Bookchin, S., Godsoe, S. & de Ste Croix, A. On behalf of the Metro Interagency Restorative Conversations Committee on Family Violence. (2022). Written brief for the study on intimate partner violence and domestic violence in Canada. Submitted to the House of Commons Standing Committee on the Status of Women. [Brief] <https://www.ourcommons.ca/Committees/en/FEWO/StudyActivity?studyActivityId=11479152>.

Yakubovich, A. R., Shastri, P., Steele, B., Moses, C., Arcenal, M., Tremblay, E., Huijbregts, M., Du Mont, J., Mason, R., Hough, L., Sim, A., Khoe, K., Bayoumi, A., Firestone, M. & O'Campo, P. (2021). Adapting the violence against women systems response to the COVID-19 pandemic: brief report. MAP Centre for Urban Health Solutions, St. Michael's Hospital, Unity Health Toronto. Toronto, ON. [Brief] [https://maphealth.ca/wp-content/uploads/Adapting-the-violence-against-women\\_MARCO-Nov-2021.pdf](https://maphealth.ca/wp-content/uploads/Adapting-the-violence-against-women_MARCO-Nov-2021.pdf).

# FINANCIAL OVERVIEW

---

The budget for the MMFC's core operations for the fiscal year 2021-2022 was \$427,223. The core funding was provided from the University of New Brunswick, the Fergusson Foundation's endowment fund and other miscellaneous revenues.

We are thankful for the on-going support from the Fergusson Foundation. Their significant financial contribution is instrumental to the continued operations of the MMFC. We also appreciate their eagerness to partner with the Centre on other funding opportunities.

We would like to acknowledge and thank the University of New Brunswick for their generous support covering the costs for the building maintenance and utilities of the MMFC. This year the low level of the building had upgrades to the flooring. We truly appreciate the support from the Faculty of Arts including their contribution to a full-time administrative support position which is housed at the Centre.

There are many other units at the University of New Brunswick that provide services and in-kind support to the Centre, especially the Office of Research Services, Financial Services, President's Office, Development and Donor Relations, People and Culture, Student Services, Campus Sexual Assault Support Advocates, Communications, Marketing, Facilities Management, UNB Libraries, College of Extended Learning, Student Career and Employment Services, Human Rights and Positive Environment Office, and Integrated Technology Services. Their contributions are greatly appreciated.











Below is an estimate of the grants received for research and education in 2021-2022.

RESEARCHERS, FELLOWS, CONSULTANTS, AND STUDENTS	FUNDING AGENCY	PERIOD	AMOUNT
<b>Centre for Criminal Justice Studies, UNB Saint John</b>			
Common Language for Intimate Partner Violence Risk Appraisal and Mitigation: An Evidence Based Policing Approach	SHHRC	2022-2024	200,000
<b>Creating Peaceful Learning Environments Team</b>			
Refugee Children and Youth: Development and Facilitation of pro-social behaviour in mega-camp contexts	SSHRC	2019-2023	200,000
Development of Academic Cheating and Integrity in Early School Years	SSHRC	2020-2024	300,000
<b>Family Law Research Team</b>			
Supporting the Health of Survivors of Family Violence in Family Law Proceedings	PHAC	2020-2023	1,200,000
<b>Religion and Violence Research Team</b>			
Flourishing Congregations Case Studies	CCCU	2021-2022	3,052
<b>Sexual Violence Research Team</b>			
Maintain: Trauma Informed Principles for Trauma Exposed Workplaces - Project evaluation	WAGE	2019-2024	100,000
<b>Violence Against Immigrant and Visible Minority Women in New Brunswick Research Team</b>			
Violence against Women Migrants and Refugees: Analyzing Causes and Effective Policy Response	CIHR	2020-2021	6,690
<b>Dr. Matt Rogers &amp; Dr. Mary Milliken</b>			
Addressing Gender-Based Violence: Community Based Supports for Children and Youth	NB Champions for Child Rights/WAGE	2021-2022	64,000
<b>Dr. Lucia O'Sullivan</b>			
Identifying Scripts and Norms Guiding Young Men's Use of Sexual Aggression Against Women	SSHRC - Insight Grant	2021-2025	194,219

**Dr. Kelly Scott-Storey**

iCAN Plan 4 Safety	CIHR	2012-2022	959,650
Masculinities, Lifetime Violence and Health	CIHR	2014-2022	383,675

**Dr. Kelly Scott-Storey & Dr. Petrea Taylor**

Cumulative Lifetime Violence and Men's Health Promotion Processes: A Grounded Theory Photovoice Study	NBHRF	2019-2022	34,973
Variation in Men's Health by Cumulative Lifetime Violence Severity and Social Determinants: A Longitudinal Exploratory Study	NBHRF	2020-2021	34,409
Variation in Men's Health by Cumulative Lifetime Violence Severity and Social Determinants of Health: A Longitudinal Exploratory Study	CIHR	2021-2026	776,476
Developing a Canadian Health and Safety Mobile App for Women Experiencing IPV	PHAC	2021-2024	101,929
An Evidenced-Based Health Promotion Intervention (iHEAL) for Women Experiencing IPV: Implementation in Diverse Contexts, Evaluation and Scale-Up	PHAC	2022-2025	2,019,833

**Dr. Matt Rogers**

Safer Stronger Grant - MMFC Communications and Knowledge Transfer	Canadian Women's Foundation	2021-2022	86,000
-------------------------------------------------------------------	-----------------------------	-----------	--------

**Sheila Burt**

Safer Stronger Grant - Essentials Skills for Interviewing Children Course and Communications support for two community projects	Canadian Women's Foundation	2021-2022	32,500
---------------------------------------------------------------------------------------------------------------------------------	-----------------------------	-----------	--------

**Dr. Mayme LeFurgey**

Postdoctoral Fellowship in Accessibility	Purdy Crawford/TD Bank	2021-2023	80,000
A Synthesis of Current Workplace Equity and Diversity Practices	Mitacs	2022	15,000

**Dr. Alexa Yakubovich**

The Interprovincial Violence Against Women (IPV) Project	CICR & Nova Scotia Health	2022-2023	600,000
----------------------------------------------------------	---------------------------	-----------	---------

**Work Study**

Communications/Social Media	UNB Office of Experiential Education	2021-2022	1,456
-----------------------------	--------------------------------------	-----------	-------

**Arts Internship**

Faculty of Arts - Educational Resources/Policy Briefs	UNB Office of Experiential Education	2021-2022	10,306
-------------------------------------------------------	--------------------------------------	-----------	--------

**Arts Internship**

Renaissance College / RWW Coordinator	UNB Office of Experiential Education	2021-2022	10,306
---------------------------------------	--------------------------------------	-----------	--------

**Canada Summer Jobs**

Digital Content Designer	SEED/CSJ	2021-2022	2,457
--------------------------	----------	-----------	-------

**GRAND TOTAL AWARDS AND GRANTS****TOTAL 7,416,931**

*Please note: Some funding covers multiple years and multiple research partners - for reporting purposes we have included the total award/grant and duration for all active grants during the fiscal.*

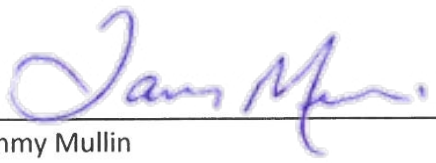
# FINANCIAL REPORT

---



**Muriel McQueen Fergusson Centre for Family Violence Research**  
**Revenue and Expenditures**  
**Fiscal Year 2021-2022**

<b>Carry Forward</b>	<b>\$ 55,017</b>
<b>REVENUE</b>	
Fergusson Foundation - Annual Operating Grant	\$ 180,000
Fergusson Foundation - Communications Officer (MMFC/FF)	\$ 42,230
Fergusson Foundation - Expense reimbursements	\$ 233
University of New Brunswick – Annual Operating Funds	\$ 167,213
University of New Brunswick – President’s Office	\$ 10,000
University of New Brunswick - Communications Officer (HRO&PE)	\$ 14,061
University of New Brunswick - Experiential Learning Office	\$ 10,306
Work Study/Canada Summer Jobs Grants	\$ 3459
<b>Total Revenue</b>	<b>\$ 427,503</b>
<b>EXPENSES</b>	
Salaries - MMFC staff (Director, Assoc Director, Admin, Communications)	\$ 334,521
Salary - Fergusson Foundation staff (Communications)	\$ 28,153
Salary - UNB HRO staff (Communications)	\$ 14,061
Salary - Arts 4000 Intern	\$ 10,306
Maintenance	\$ 30,596
Work Study/Canada Summer Jobs	\$ 5,335
Office (phone, copier, supplies)	\$ 7,063
Office Equipment/Computers	\$ 3,227
Professional Fees	\$ 3,275
Conferences/seminars/professional development	\$ 224
Research Support	\$ 2,500
Travel	\$ 104
<b>Total Expenses</b>	<b>\$ 439,365</b>
<b>BALANCE at Year End</b>	<b>\$ 43,155</b>

  
 Tammy Mullin  
 Financial Analyst  
 Office of Research Services, UNB

Date: July 14, 2022

  
 Sheila Burt  
 Acting Associate Director  
 Muriel McQueen Fergusson Centre

Date: July 14, 2022





# THANK YOU

---

FOR YOUR ONGOING SUPPORT OF THE MMFC

---