

**CERAMIC SHERDS IN THE GEORGE FREDERICK CLARKE COLLECTION:**

**A TECHNOLOGICAL APPROACH**

by

Cora A. Woolsey

A Thesis Submitted in Partial Fulfillment

of the Requirements for the Degree of

**Masters of Arts**

**in the Graduate Academic Unit of Anthropology**

Supervisor: David W. Black, PhD, Department of Anthropology

Examining Board: Susan E. Blair, PhD, Department of Anthropology

External Examiner: John W. Geysen, PhD, Department of Classics and Ancient History

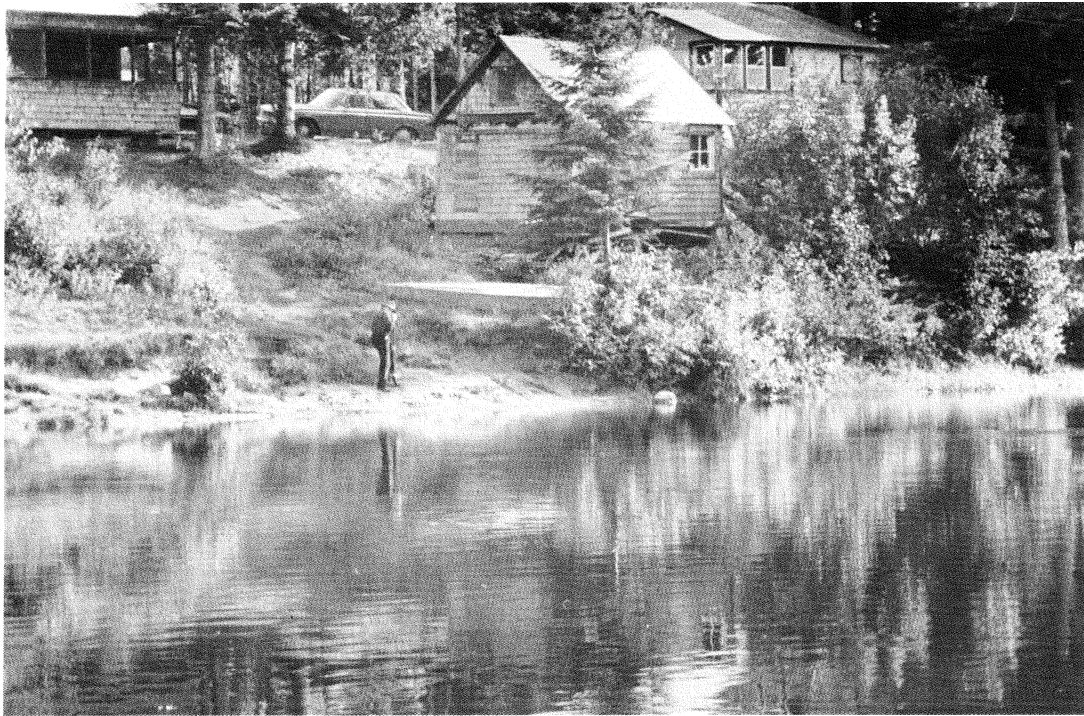
This thesis is accepted by the

Dean of Graduate Studies

**THE UNIVERSITY OF NEW BRUNSWICK**

**September, 2010**

© Cora A. Woolsey, 2010



I make no apology for being an amateur. The doing of anything for the pure love of it which adds to our knowledge and does no harm to any one, has its own reward.

—G. F. Clarke, 1968

## **ABSTRACT**

The aim of this research is to study pre-contact ceramics from a technological perspective. The GFC Collection, entrusted to UNB, contains 189 ceramics from five New Brunswick locations, which I have studied using microscopy, scanning electron microscopy, total digest, stable isotope analysis, and computed tomography.

In New Brunswick, ceramics have almost never been studied as interesting in themselves, but have usually been used as a proxy for other areas of study, such as chronology and ethnicity. This research looks at the ceramics in the GFC Collection from a technologically functional standpoint in order to challenge this perception. I endeavour to apprehend the choices made by potters, and what these choices signify. Although these questions are difficult to address using archaeological materials, one possible means of addressing them is through the analysis of function, which reveals the technological reasons behind many so-called “stylistic” attributes.