

Events

QUEST-SJ

QUEST-SJ meets monthly (except July and August) via Zoom to discuss topics in qualitative research (e.g. ethics, funding, collaboration opportunities), methodological approaches to research, and other emerging issues in the development of knowledge.

Our next session will be **Qualitative Practical Coding Application** on December 15 from 3-4 pm. Dr. Kerrie Luck, a registered Occupational Therapist who recently completed her post-doctoral fellowship with the Centre for Research in Integrated Care (CRIC) at UNB, will present practical tips on qualitative research coding with an applied example from the project titled: Occupational disruption during the COVID-19 Pandemic among individuals living with chronic disease. A brief overview of this study will also be provided. Email quest-sj@unb.ca to register or click on the button below for more information.

[More](#)

The Canadian Healthcare Navigation Conference April 15-16, 2021 (virtual)

The Canadian Healthcare Navigation Conference (CHNC) will bring together researchers, decision-makers, administrators, clinicians, trainees, and individuals with lived experience who are involved with navigation services.

Attendees will learn about existing models of navigation across Canada; best practices in implementation and evaluation; and ongoing research in the field of navigation. This virtual online conference will be hosted in partnership between NaviCare/ SoinsNavi at the University of New Brunswick in Saint John and the Family Navigation Project at Sunnybrook Health Sciences Centre in Toronto.

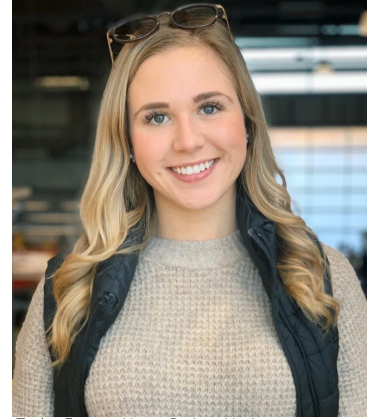
For more information on the first-ever Canadian Healthcare Navigation Conference visit www.chnconference.ca, or click the button below.

[More](#)

Employee Spotlight

Taylor Fearon, Nurse Patient Navigator

My Name is Taylor Fearon and my current role within the Centre for Research in Integrated Care (CRIC) team is Nurse Patient Navigator for NaviCare/SoinNavi. My work with the CRIC team started when I was working on my undergraduate degree in nursing. I was fortunate to gain a summer research assistant position working closely with NaviCare/SoinNavi and on other CRIC research projects. Upon completion of my bachelor's in nursing program, I joined the NaviCare/SoinNavi team as the Nurse Patient Navigator with the hope to improve the quality of life for children in New Brunswick and educate families in the community about supports and resources that are available to meet their needs. I am currently in the process of completing the Master's in Nursing (MN) program through UNB.



Taylor Fearon, Nurse Patient Navigator

As the Nurse Patient Navigator, I am continually working on the intervention portion of the NaviCare/ SoinNavi project, which includes helping children/youth, their families, and care providers navigate health, social, and education systems. In addition, I've been working on organizing monthly webinars with different community organizations in an attempt to educate the public on resources that are available in New Brunswick to support children/youth with health care needs. If you would like to be advised of upcoming webinars, please email [navicare-soinsnavi@unb.ca].

The positive work environment, constant support, and motivation from all team members have increased my passion for nursing and health research. Moving forward, I hope to complete the Master of Nursing program and continue to be involved with CRIC. Ultimately, I am considering obtaining a PhD in interdisciplinary studies and becoming involved in health education as well.

Trainee Spotlight

Research Project: Facebook peer-to-peer support group for families of children with health care needs in New Brunswick



Kate Kelly, Doctoral Candidate, UNB

Kate Kelly is a University of New Brunswick (UNB) doctoral candidate under the supervision of Dr. Shelley Doucet. Kate was drawn to CRIC due to its inclusion of patients and caregivers throughout the entire research process (known as patient-oriented research) and the centre's direct and innovative connection between research and community-based health services in New Brunswick.

Kate's doctoral research focuses on investigating peer-to-peer support on social media for families of children with complex care needs. Using the Facebook platform, she is working to develop a peer-to-peer support group for this population and evaluating how and whether this type of communication can better support New Brunswick families.

Upon completion of her PhD, Kate hopes to continue working with CRIC as a post-doctoral fellow, assisting in the important and on-going work of the centre.

If you, or someone you know, would like to join this private Facebook group, please search "NB Children with Health Care Needs / Enfants Ayant Besoin de Soins de Santé."

NaviCare/SoinsNavi Patient and Family Advisory (PFAC) Committee

NaviCare/SoinsNavi is a patient navigation centre for children and youth with health care needs and their families in New Brunswick. A key component of the centre is our patient and family advisory council (PFAC), which consists of seven (7) volunteer members who advise the patient navigator and research team, as well as collaborates on special projects that arise from discussions with key stakeholders. Examples of projects led by the PFAC include a Journey Map, which is a visual aid developed to assist families with navigating the system from the moment of diagnosis; peer support videos that share stories about navigating the system; and a workshop for care providers and other caregivers of children with health care needs. PFAC members are often invited to participate in other related workshops, public outreach events, and conferences.

NaviCare/SoinsNavi is looking for a dynamic individual to join the PFAC. The position is a one (1) year renewable term beginning in January 2020. We are seeking someone with significant lived experience receiving services within the healthcare system as a youth with health needs, or as a parent, guardian, or other involved family member. The PFAC meets monthly in a virtual setting along with an in-person annual meeting in the spring.

If you are interested in becoming part of the PFAC, or know someone who would be a good fit, please reach out to cric@unb.ca. We look forward to hearing from you.

Follow us on Social Media!



Recent Publications

Luke, A., Luck, K., & Doucet, S. (2020). Experiences of caregivers as clients of a patient navigation program for children and youth with complex care needs: A qualitative descriptive study. *International Journal of Integrated Care*, 20(4): 10, 1-10.

[More](#)

Luck, K., & Doucet, S. (2020). A rapid review exploring nurse-led memory clinics. *Nursing Open*. 00, 1-12.

[More](#)

Project Recruitment

COGNISANCE: Co-designing dementia care in New Brunswick: Building the future together

If you have received a dementia diagnosis within the last 2 years; are a care partner of an individual who (within the last 2 years) received a dementia diagnosis; or are a health or social care provider (e.g., family doctor, nurse practitioner, specialist, nurse, social worker, Alzheimer's society staff) who provides care or support for persons with dementia and/or their care partners, we would encourage you to reach out. We are interested in your experiences with the diagnostic process and the supports provided after a diagnosis of dementia. You can participate in a survey and/or a focus group. Please contact us by phone [506-653-2863] or by email [cognisance@unb.ca] to learn more about how to participate in this project. Your participation in this study is voluntary. Please note that participation for this stage ends on September 18, 2020.

Improving Transitions from Pediatric to Adult Healthcare for Youth/Young Adults with Complex Care Needs and their Families

Are you a youth/young adult with complex care needs between the ages of 14-30 years transitioning (or have transitioned) from pediatric to adult healthcare? Are you a primary caregiver of a youth/young adult with complex care needs transitioning from pediatric to adult healthcare? Are you a health or social care provider involved with the care/support of youth/young adults with complex care needs transitioning (or have transitioned) from pediatric to adult healthcare? If you answered YES to any of these questions, then you are eligible to participate in this study. Please know that participation is voluntary. To take part, contact transitionsincare@unb.ca to schedule an interview or complete the anonymous online survey at:

https://unbcric.ca1.qualtrics.com/jfe/form/SV_a4tOU6Q8vRXu4F7

Health Research Priorities for Children and Youth with Complex Care Needs

Are you a child or youth with complex care needs? Are you a caregiver of a child or youth with complex care needs? Children/youth with complex care needs require significant additional health, social, and/or educational support beyond what is required by children/youth in general. If you answered yes to any of these questions, we want to hear from you! We are organizing focus groups to learn about your health research priorities to improve the care for children and youth with complex care needs and their caregivers in New Brunswick. If you are interested in taking part in a focus group contact us by email [lillian.macneill@unb.ca].

Health Research Priorities for Older Adults with Complex Care Needs

Are you an older adult (65 years or older) with complex care needs? Are you a caregiver of an older adult with complex care needs? Older adults with complex care needs require significant additional health, social, and/or educational support beyond what is required by older adults in general. If you answered yes to any of these questions, we want to hear from you! We are organizing focus groups to learn about your health research priorities to improve the care for older adults with complex care needs and their caregivers in New Brunswick. If you are interested in taking part in a focus group contact us by email [gailing.anthonisen@unb.ca].